

FACT BOOK 2015

WEST CHESTER UNIVERSITY OF PENNSYLVANIA

West Chester University of Pennsylvania Office of Institutional Research

**887 South Matlack Street
West Chester, PA 19383
Telephone (610) 436-2835**

Fax (610) 436-2635

Introduction & Acknowledgements

This Fact Book provides some of the most commonly requested information about West Chester University. Much of the information is drawn from the University's database and state mandated reports. Other offices and sources used are cited throughout the document. The cooperation of those offices and sources is much appreciated.

The Fact Book is divided into several chapters: Admissions, Enrollment, Retention/Graduation Rates, Academic Degree Programs & Accredited Programs, Graduation/Degree Information, and Resources (including financial aid), Services and Facilities.

Comments and suggestions about additional information that might be included are much appreciated. Please forward your suggestions to ninamdar@wcupa.edu.

Additional institutional information is available on our website: <http://www.wcupa.edu/infoservices/oir/>

Table of Contents

Table of Contents	2-3
WCU Quick Facts	4
GENERAL INFORMATION	
About the University and Its Mission	6-8
West Chester University Organizational Chart	9
ADMISSIONS	
Undergraduate Admissions Standards	11
Admission Application Statistics	12-13
First Time Full-Time First Year by Admission Type	14
SAT Score Distribution: Fall 2015	15-16
SAT Average Scores	16
ACT Score Distribution: Fall 2015	17-18
ACT Average Scores	18
Feeder High Schools: Fall 2015	19
Feeder Colleges: Fall 2015	20
First Time First Year Enrollment by County	21
First Time First Year Enrollment by State	22
First-Time First Year Admission Yield Statistics	23
First-Time First Year Admission Yield Chart	24
First-Time Transfer Admission Yield Statistics	25
First-Time Transfer Admission Yield Chart	26
ENROLLMENT	
Head Count Enrollment by Race/Ethnicity and Gender	28

To be continued.....

Table of Contents (continued)

ENROLLMENT (continued)

Head Count Enrollment by Degree Status and College Fall 2015	29
Head Count Enrollment by State: Fall 2012 to 2015	30-31
Enrollment by Pennsylvania County of Residence: Fall 2015	32
Head Count Enrollment by Ethnicity and Gender Fall 2011 to Fall 2015	33
Head Count Enrollment by College : Fall 2011 to Fall 2015	34-35
Head Count Enrollment by Student Level: Fall 2010 to 2015	36-37
Credit Hours and Student FTE Enrollment	38-39

RETENTION AND GRADUATION

Retention & Graduation Rates for First-Time, Full-Time First Year: University Summary	41
Second-Year Retention Rates for First-Time, Full-Time First Year by Race/Ethnicity and by Gender	42
Four and Six-Year Graduation Rates by Race/Ethnicity	43
Four and Six-Year Graduation Rates by Gender	44

ACADEMIC AND DEGREE PROGRAMS

Undergraduate Degrees and Majors	46-47
Graduate Degrees and Majors	48-49
Professional and Program Accreditations	50-51

DEGREES CONFERRED

Undergraduate and Graduate Degrees Conferred by College and Academic Plan	53-73
---	-------

RESOURCES, SERVICES & FACILITIES

Tuition and Fees	75
Library Resources	77

Quick Facts

West Chester University
West Chester, PA 19383
Telephone (610) 436-1000
<http://www.wcupa.edu/>

Founded	1871
President	Dr. Greg R. Weisenstein
University Accreditation	Middle States Commission on Higher Education
Fall 2015 Enrollment	16,611
Undergraduate	14,226
Graduate	2,385
Fall 2015 Credit Hours	215,590.0
Undergraduate	199,742.0
Graduate	15,848.0
Undergraduate Degree Programs	118
Undergraduate Certificates	5
Undergraduate Non-Degree, Teacher Certification	39
Graduate Degree Programs	103
Master's Programs	101
Doctorate Program*	2
Graduate Certificates	37
Graduate Non-Degree, Teaching Certification, Professional Growth, Letter of Completion	78
Degrees Awarded in 2014-2015	4,076
Bachelor's	3,383
Master's	693

*University started Doctoral Programs in 2012.



General Information

About the University and Its Mission

The West Chester University Mission Statement

West Chester University, a member of the Pennsylvania State System of Higher Education, is a public, regional, comprehensive institution committed to providing access and offering high-quality undergraduate education, select post-baccalaureate and graduate programs, and a variety of educational and cultural resources for its students, alumni, and citizens of southeastern Pennsylvania.

The West Chester University Values Statement

West Chester University is committed to attracting, enrolling, and graduating quality students from a wide variety of educational, cultural, and economic backgrounds. This endeavor requires the University to attract and retain highly qualified faculty and staff and to provide each member of the University community with learning and leadership development opportunities. To this end, the University supports and encourages programs which benefit all people and which seek to eradicate discrimination and injustice. We treasure what we believe to be the highest principles of American society: the worth and uniqueness of each individual, the belief that success is to be earned by individual effort put forth in an environment founded on equality of opportunity, and the appreciation of the ideal of an inclusive society.

We believe that it is incumbent upon all members of our community—staff, students, faculty and administrators—to conduct themselves with civility toward one another at all times. We value the special talents and contributions of each member of our community. We further affirm the worth and dignity of each member and the shared responsibility of all to treat each other as individuals, with respect and courtesy.

As a university owned by the citizens of Pennsylvania, we value our mission to provide the best educational opportunities possible which will enable the University community to successfully address the concerns of a global society. To this end, West Chester University seeks to provide diligent advising for students and to focus on teaching students to think clearly and critically, to make logical and ethical judgments, and to communicate effectively with others.

West Chester University's community strongly supports the principles of academic integrity and academic responsibility, viewing both as the province of every member of the campus community. We hold the highest esteem for teaching directed toward student learning and affirm that mastery of content as well as mastery of teaching skills necessary to communicate such content is paramount.

This values statement is intended to be a living document which will serve West Chester University as it changes and evolves in the coming years.

About West Chester University of Pennsylvania

West Chester University offers bachelors and masters degrees in the arts and sciences, teacher training and certification, advanced study preparation in fields such as medicine and law, education for specific professions, and continuing education.

Total enrollment at West Chester University includes approximately 14,226 undergraduate students and 2,385 graduate students. While most undergraduates are recent high school graduates preparing for career objectives, many others are older individuals, including veterans and homemakers, who either never before had the opportunity for a college education or whose schooling was interrupted.

Most students are residents of Pennsylvania but students from other states and foreign countries are welcome. The student body at West Chester University represents a cross section of many ethnic, racial, and religious groups and includes students from all socioeconomic levels.

Like the world around it, West Chester University is constantly transforming. The school continues to broaden and modify the nature and number of its programs to reflect the needs of its students in their endeavor to prepare themselves for success and fulfillment in life.

The History of West Chester University of Pennsylvania

Founded in 1871, West Chester University began as West Chester Academy, a private, state-aided school that existed from 1812 to 1869. The academy enjoyed strong support from the highly intellectual Chester County Cabinet of the Natural Sciences of the pre-Civil War decades. It was recognized as one of Pennsylvania's leading preparatory schools, and its experience in teacher training laid the groundwork for the normal school years that were to follow.

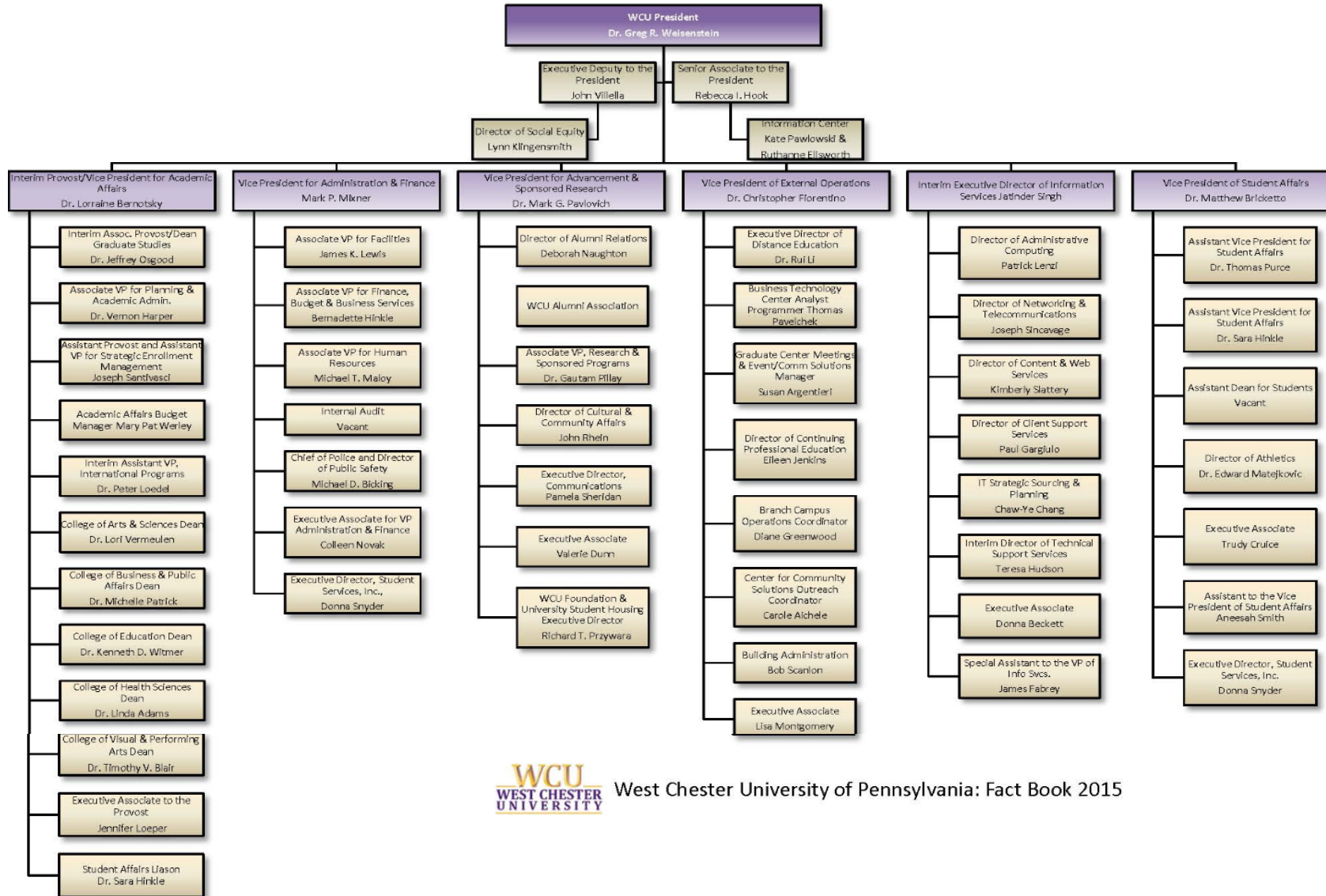
As the state began to take increasing responsibility for public education, the academy was transformed into West Chester Normal School, still privately owned but state certified. The normal school admitted its first class, consisting of 160 students, on September 25, 1871. In 1913, West Chester became the first of the normal schools to be owned outright by the Commonwealth.

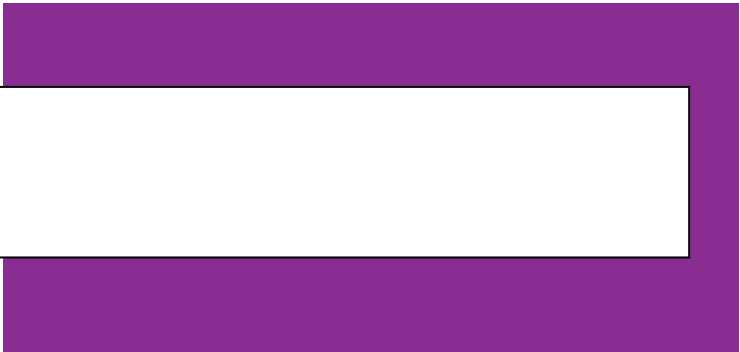
West Chester became West Chester State Teachers College in 1927 when Pennsylvania initiated a four-year program of teacher education. In 1960, as the Commonwealth paved the way for liberal arts programs in its college system, West Chester was renamed West Chester State College, and two years later introduced the liberal arts program that turned the one-time academy into a comprehensive college.

In recognition of the historic merit of the campus, in 1981 the West Chester State College Quadrangle Historic District was placed on the National Register of Historic Places. The buildings included in this historic district are Philips Memorial Building, Ruby Jones Hall, Recitation Hall, and the Old Library. Except for Philips, these buildings are all constructed of native Chester County serpentine stone.

West Chester State achieved another major milestone with passage of the State System of Higher Education bill. West Chester became one of the 14 universities in the State System of Higher Education on July 1, 1983. Along with its new name -- West Chester University of Pennsylvania of the State System of Higher Education -- the institution acquired a new system of governance and the opportunity to expand its degree programs.

Organizational Chart





ADMISSIONS

Undergraduate Admissions Standards

West Chester University prides itself on the holistic approach used in evaluating applicant credentials. Each application is reviewed individually, and we carefully consider scholastic performance and academic preparation to determine an individual's potential for success.

For regular admission as a first-year student we recommend successful completion of a college preparatory curriculum in high school, honors and AP classes are a plus, rank in class in the 60th percentile or better, a grade point average of 3.00+, and a minimum combined SAT score of 1040 or better (prefer a minimum of 500 in both verbal and math). It is important to realize that these factors are guidelines for consideration. The academic profile of the regular admits who enroll at West Chester University is a mean SAT combined score of 1067 (scores used for Admission Decision), a rank in the top 34% of their class or 66th percentile, and a grade point average of 3.49.

Applicants who do not meet regular admissions standards may be considered for a special admissions program if appropriate or denied admission and counseled to enroll at another college or university for a minimum of 24-30 credits before reapplying as a transfer student.

Transfer applicants must have a minimum grade point average of 2.00 for admissions consideration. The majority of our transfers have a Cumulative GPA of 2.50 or better prior to transferring to the University. Some of our academic programs require a higher grade point average and specific course prerequisites. Pennsylvania Community College students who have earned an Associate of Arts or Associate of Science degree and students who have completed 12 or more transferable credits from a State System University with a 2.00 or above have an Academic Passport that provides entry into any university in the State System of Higher Education. For more information on admissions requirements and the Academic Passport, please contact the Office Admissions at (610) 436-3411 or e-mail ugadmiss@wcupa.edu

Admission Application Statistics for First Time, Full Time, First Year Students Fall 2015

Race/Ethnicity	Fall 2014			Fall 2015			Total	
	Male	Female	Total	Male	Female	Total	Change	% Change
African American								
Applied	580	1,021	1,601	568	1,032	1,600	-1	-0.06%
Accepted	244	451	695	256	485	741	46	6.62%
Enrolled	84	148	232	83	168	251	19	8.19%
Asian								
Applied	146	263	409	128	264	392	-17	-4.16%
Accepted	70	132	202	72	147	219	17	8.42%
Enrolled	15	33	48	15	23	38	-10	-20.83%
Caucasian								
Applied	3,670	6,177	9,847	3,365	5,964	9,329	-518	-5.26%
Accepted	2,038	3,451	5,489	2,065	3,597	5,662	173	3.15%
Enrolled	697	1,146	1,843	681	1,150	1,831	-12	-0.65%
Hawaiian/Pacific Islander								
Applied	2	9	11	6	8	14	3	27.27%
Accepted	1	5	6	5	2	7	1	16.67%
Enrolled	0	4	4	2	0	2	-2	-50.00%
Hispanic or Latino								
Applied	331	564	895	260	553	813	-82	-9.16%
Accepted	176	273	449	167	335	502	53	11.80%
Enrolled	53	66	119	68	91	159	40	33.61%
Multiracial								
Applied	148	264	412	128	256	384	-28	-6.80%
Accepted	85	141	226	80	150	230	4	1.77%
Enrolled	31	48	79	35	52	87	8	10.13%
Native American								
Applied	4	17	21	6	9	15	-6	-28.57%
Accepted	0	1	1	1	2	3	2	200.00%
Enrolled	0	1	1	0	1	1	0	0.00%

to be continued.....

Admission Application Statistics for First Time, Full Time, First Year Students: Fall 2015 (continued)

Race/Ethnicity	Fall 2014			Fall 2015			Total	
	Male	Female	Total	Male	Female	Total	Change	%Change
Non-Resident Alien								
Applied	8	8	16	10	15	25	9	56.25%
Accepted	2	4	6	5	11	16	10	166.67%
Enrolled	2	0	2	1	6	7	5	250.00%
Not Supplied								
Applied	36	43	79	21	31	52	-27	-34.18%
Accepted	19	15	34	9	19	28	-6	-17.65%
Enrolled	10	6	16	3	2	5	-11	-68.75%
Total								
Applied	4,925	8,366	13,291	4,492	8,132	12,624	-667	-5.01%
Accepted	2,635	4,473	7,108	2,660	4,748	7,408	300	4.22%
Enrolled	892	1,452	2,344	888	1,493	2,381	37	1.58%

First Time, Full Time, First Year Students by Admission Type

Admittance Type	2011		2012		2013		2014		2015	
	N	%	N	%	N	%	N	%	N	%
Regular	1,893	82.9%	1,935	83.2%	1,893	82.6%	1,968	84.0%	1,996	83.8%
ADP ACT 101	55	2.4%	51	2.2%	73	3.2%	68	2.9%	75	3.1%
ADP Non-ACT 101	104	4.6%	103	4.4%	108	4.7%	112	4.8%	106	4.5%
Special Admission	231	10.1%	237	10.2%	218	9.5%	196	8.4%	204	8.6%
Total	2,283		2,326		2,292		2,344		2,381	

SAT Score Distribution: First Time, Full Time, First Year Students Fall 2015

SAT- Critical Reading Distribution

Score	2011		2012		2013		2014*		2015*	
	N	%	N	%	N	%	N	%	N	%
700-800	37	1.6%	28	1.2%	29	1.3%	28	1.4%	23	1.1%
600-699	392	17.2%	396	17.0%	363	15.8%	328	15.8%	322	15.4%
500-599	1,249	54.7%	1,260	54.2%	1,261	55.0%	1,165	56.3%	1,135	54.4%
400-499	547	24.0%	585	25.2%	576	25.1%	476	23.0%	542	26.0%
300-399	57	2.5%	57	2.5%	62	2.7%	73	3.5%	65	3.1%
200-299	1	0.0%	0	0.0%	0	0.0%	0	0.0%	0	0.0%
Total	2,283	100%	2,326	100%	2,291	100%	2,070	100%	2,087	100%

SAT- Mathematics Distribution

Score	2011		2012		2013		2014*		2015*	
	N	%	N	%	N	%	N	%	N	%
700-800	27	1.2%	33	1.4%	38	1.7%	22	1.1%	26	1.2%
600-699	443	19.4%	478	20.6%	495	21.6%	421	20.3%	395	18.9%
500-599	1,330	58.3%	1,348	58.0%	1,293	56.4%	1,173	56.7%	1,137	54.5%
400-499	427	18.7%	428	18.4%	387	16.9%	383	18.5%	451	21.6%
300-399	56	2.5%	39	1.7%	78	3.4%	71	3.4%	78	3.7%
200-299	0	0.0%	0	0.0%	0	0.0%	0	0.0%	0	0.0%
Total	2,283	100%	2,326	100%	2,291	100%	2,070	100%	2,087	100%

*Includes only scores used for admission decision.

SAT Score Distribution: First Time, Full Time, First Year Students Fall 2015 (continued)

SAT – Writing Distribution

Score	2011		2012		2013		2014*		2015*	
	N	%	N	%	N	%	N	%	N	%
700-800	30	1.3%	18	0.8%	21	0.9%	17	0.8%	27	1.3%
600-699	331	14.8%	335	14.7%	368	16.5%	288	13.9%	289	13.8%
500-599	1,166	52.1%	1,222	53.7%	1,127	50.6%	1,115	53.9%	1,020	48.9%
400-499	642	28.7%	633	27.8%	619	27.8%	556	26.9%	643	30.8%
300-399	69	3.1%	69	3.0%	90	4.0%	91	4.4%	105	5.0%
200-299	0	0.0%	0	0.0%	2	0.1%	3	0.1%	3	0.1%
Total	2,238	100%	2,277	100%	2,227	100%	2,070	100%	2,087	100%

SAT Average Scores

	Critical Reading			Mathematics			Writing			Combined**		
	WCU	PA	US	WCU	PA	US	WCU	PA	US	WCU	PA	US
Fall 2006	527	493	503	535	500	518				1,062	993	1,028
Fall 2007	525	493	502	533	499	515				1,059	992	1,017
Fall 2008	523	494	502	535	501	515	521	483	494	1,059	995	1,017
Fall 2009	523	493	501	535	501	515	524	483	493	1,059	994	1,016
Fall 2010	544	492	501	533	501	516	528	480	492	1,078	993	1,017
Fall 2011	536	493	497	542	501	514	528	479	489	1,078	994	1,011
Fall 2012	532	491	496	545	501	514	527	480	488	1,077	992	1,010
Fall 2013	534	494	496	545	504	514	528	482	488	1,079	998	1,010
Fall 2014*	532	497	497	542	504	513	524	480	487	1,074	1,001	1,010
Fall 2015*	530	499	495	536	504	511	520	482	484	1,067	1,003	1,006

*Includes only scores used for admission decision.

**Combined Critical Reading and Mathematics scores.

ACT Score Distribution: First Time, Full Time, First Year Students Fall 2015

ACT- English Distribution

Score	2014		2015	
	N	%	N	%
1-10	1	0.4%	0	0.0%
11-20	46	17.0%	79	27.1%
21-30	215	79.3%	190	65.3%
31-36	9	3.3%	22	7.6%
Total	271	100%	291	100%

ACT- Math Distribution

Score	2014		2015	
	N	%	N	%
1-10	0	0.0%	0	0.0%
11-20	73	26.9%	99	34.0%
21-30	195	72.0%	180	61.9%
31-36	3	1.1%	12	4.1%
Total	271	100%	291	100%

ACT- Reading Distribution

Score	2014		2015	
	N	%	N	%
1-10	0	0.0%	0	0.0%
11-20	44	16.2%	63	21.6%
21-30	190	70.1%	192	66.0%
31-36	37	13.7%	36	12.4%
Total	271	100%	291	100%

ACT- Science Distribution

Score	2014		2015	
	N	%	N	%
1-10	1	0.4%	0	0.0%
11-20	46	17.0%	64	22.0%
21-30	217	80.1%	212	72.9%
31-36	7	2.6%	15	5.2%
Total	271	100%	291	100%

Starting Fall 2014, ACT scores are used for admission decision.
Above tables display only scores used for admission decision.

ACT Score Distribution: First Time, Full Time, First Year Students Fall 2015 (continued)

ACT- Composite Distribution

Score	2014		2015	
	N	%	N	%
1-10	0	0.0%	0	0.0%
11-20	35	12.9%	63	21.6%
21-30	230	84.9%	219	75.3%
31-36	6	2.2%	9	3.1%
Total	271	100%	291	100%

ACT Average Scores

	English			Math			Reading		
	WCU	PA	US	WCU	PA	US	WCU	PA	US
Fall 2014	23.3	22.1	20.3	22.8	22.8	20.9	25.0	23.0	21.3
Fall 2015	23.0	22.5	20.4	22.6	22.8	20.8	24.2	23.2	21.4

	Science			Composite		
	WCU	PA	US	WCU	PA	US
Fall 2014	23.5	22.2	20.8	23.8	22.7	21.0
Fall 2015	23.1	22.5	20.9	23.3	22.9	21.0

Starting Fall 2014, ACT scores are used for admission decision.
Above tables display only scores used for admission decision.

Feeder High Schools: Fall 2015

Pennsylvania High Schools With the Most Number of Entering First Year Students

<i>School</i>	<i>#</i>
Central Bucks High School - South	38
Coatesville Area Senior High School	37
Downingtown High School East	36
North Penn High School	36
West Chester East High School	35
Cardinal O'Hara High School	30
Downingtown West	30
Central Bucks High School West	28
West Chester Bayard Rustin High School	28
Avon Grove High School	27
Garnet Valley High School	27
B Reed Henderson High School	26
Spring-Ford Senior High School	26
Bishop Shanahan High School	23
Pennsbury High School	23
Sun Valley High School	22
Upper Darby High School	22
Council Rock High School South	21
Marple Newtown High School	20
Methacton High School	20
Conestoga High School	18

<i>School</i>	<i>#</i>
Wilson High School	18
Council Rock High School North	17
Neshaminy High School	17
Owen J Roberts High School	17
Oxford Area High School	17
Parkland High School	17
Penncrest High School	17
Plymouth-Whitemarsh Hs	17
Springfield High School	17
Unionville High School	17
Central High School	16
Abington High School	15
Cumberland Valley High School	15
Freedom High School	15
Hatboro-Horsham High School	15
Haverford High School	15
Hempfield High School	15
Monsignor Bonner-Archb Pren Hs	15
Archbishop Wood High School	14
Kennett High School	14
Ridley High School	14

<i>School</i>	<i>#</i>
Archbishop Carroll High School	13
Archbishop Ryan High School	13
Central Bucks High School East	13
Great Valley High School	13
Phoenixville Area High School	13
Manheim Township High School	12
William Tennent High School	12
East Brunswick High School	11
Mechanicsburg Area Senior Hs	11
Notre Dame High School	11
Pope John Paul Ii High School	11
Souderton Area High School	11
Strath Haven High School	11
Bishop McDevitt High School	10
Hazleton Area High School	10
Pottsville Area High School	10
Radnor High School	10
Scranton High School	10
St. Hubert High School	10
Upper Dublin High School	10

Feeder Colleges: Fall 2015

Institutions Previously Attended With the Most Number of New Fall Undergraduate Transfer Students
 [Excludes students who transitioned from non-degree to degree as well as Transfers with first degree at WCU]

Name	Count	Percent	Type	State
Delaware County Community College	364	31.41%	2 Year Public	PA
Montgomery County Community College	147	12.68%	2 Year Public	PA
Community College of Philadelphia	87	7.51%	2 Year Public	PA
Bucks County Community College	67	5.78%	2 Year Public	PA
Pennsylvania St Univ. University Park	47	4.06%	4 Year Public	PA
Northampton County Area Community College	31	2.67%	2 Year Public	PA
Harrisburg Area Cmty College	30	2.59%	2 Year Public	PA
Kutztown University	29	2.50%	4 Year Public	PA
Bloomsburg University	28	2.42%	4 Year Public	PA
Millersville University	23	1.98%	4 Year Public	PA
Temple University	21	1.81%	4 Year Public	PA
Indiana University of Pennsylvania	18	1.55%	4 Year Public	PA
Lehigh Carbon Community College	16	1.38%	2 Year Public	PA
Reading Area Community College	16	1.38%	2 Year Public	PA
Shippensburg University	15	1.29%	4 Year Public	PA
University of North Dakota Grand Forks	14	1.21%	4 Year Public	ND
Burlington County College	13	1.12%	2 Year Public	NJ
All Military	12	1.04%	4 Year Public	
East Stroudsburg University	12	1.04%	4 Year Public	PA
Drexel University	10	0.86%	5 Year Private	PA
International College	10	0.86%	4 Year Private	Beirut, Lebanon
Immaculata University	9	0.78%	4 Year Private	PA
Coastal Carolina University	8	0.69%	4 Year Public	SC
Delaware Technical Community College Newark	8	0.69%	2 Year Public	DE
Arcadia University	7	0.60%	4 Year Private	PA
Harcum College	7	0.60%	2 Year Private	PA
Neumann College	7	0.60%	4 Year Private	PA
Pennsylvania Institute of Technology	7	0.60%	2 Year Private	PA
Cabrini College	6	0.52%	4 Year Private	PA
Cheyney University	6	0.52%	4 Year Public	PA
Towson University	6	0.52%	4 Year Public	MD
University of Pittsburgh	6	0.52%	4 Year Private	PA
Brookdale Cmty College	5	0.43%	2 Year Public	NJ
Camden County College	5	0.43%	2 Year Public	NJ
Gloucester County College	5	0.43%	2 Year Public	NJ
Gwynedd-Mercy College	5	0.43%	4 Year Private	PA
Lock Haven Univ Pa	5	0.43%	4 Year Public	PA
University of Delaware	5	0.43%	4 Year Private	DE
Wesley College	5	0.43%	4 Year Private	DE
Widener University	5	0.43%	4 Year Private	PA
Delaware Technical Community College Wilmington	4	0.35%	2 Year Public	DE
Eastern University	4	0.35%	4 Year Private	PA
James Madison University	4	0.35%	4 Year Public	VA
Mercer County Cmty College	4	0.35%	2 Year Public	NJ
Pennsylvania College Tech	4	0.35%	4 Year Public	PA
St Josephs University	4	0.35%	4 Year Private	PA
West Virginia Univ Morgantown	4	0.35%	4 Year Public	WV
Generic College	4	0.35%	4 Year Public	
Total	1,159	100%		

First Time, Full Time, First Year Student Enrollment by Pennsylvania County: Fall 2015

Top 10 Counties* with Most Enrollments Ranked

County	Total	Percent	Rank
Adams	10	0.50%	
Allegheny	7	0.35%	
Armstrong	0	0.00%	
Beaver	1	0.05%	
Bedford	0	0.00%	
Berks	70	3.52%	7
Blair	1	0.05%	
Bradford	1	0.05%	
Bucks	223	11.21%	2
Butler	3	0.15%	
Cambria	2	0.10%	
Cameron	0	0.00%	
Carbon	8	0.40%	
Centre	3	0.15%	
Chester	406	20.40%	1
Clarion	1	0.05%	
Clearfield	0	0.00%	
Clinton	0	0.00%	
Columbia	3	0.15%	
Crawford	1	0.05%	
Cumberland	50	2.51%	10
Dauphin	27	1.36%	
Delaware	285	14.32%	4

County	Total	Percent	Rank
Elk	0	0.00%	
Erie	0	0.00%	
Fayette	1	0.05%	
Franklin	9	0.45%	
Fulton	1	0.05%	
Greene	0	0.00%	
Huntingdon	0	0.00%	
Indiana	0	0.00%	
Jefferson	0	0.00%	
Juniata	0	0.00%	
Lackawanna	51	2.56%	
Lancaster	93	4.67%	6
Lawrence	0	0.00%	
Lebanon	15	0.75%	
Lehigh	47	2.36%	8
Luzern	38	1.91%	
Lycoming	3	0.15%	
McKean	0	0.00%	
Mercer	0	0.00%	
Mifflin	0	0.00%	
Monroe	20	1.01%	
Montgomery	255	12.81%	3
Montour	0	0.00%	

County	Total	Percent	Rank
Northampton	60	3.02%	9
Northumberland	2	0.10%	
Perry	2	0.10%	
Philadelphia	201	10.10%	5
Pike	5	0.25%	
Potter	0	0.00%	
Schuylkill	19	0.95%	
Snyder	3	0.15%	
Somerset	0	0.00%	
Sullivan	0	0.00%	
Susquehanna	3	0.15%	
Tioga	2	0.10%	
Union	1	0.05%	
Venango	0	0.00%	
Warren	0	0.00%	
Washington	0	0.00%	
Wayne	5	0.25%	
Westmoreland	2	0.10%	
Wyoming	2	0.10%	
York	48	2.41%	
Out of State	0	0.00%	
Out of Country	0	0.00%	
Total	1,990	100.00%	

*County at the time of admission.

First Time, Full Time, First Year Student Enrollment by State: Fall 2015

Top 10 States* with Most Enrollments Ranked

State	Total	Percent	Rank
Alabama	0	0.00%	
Alaska	0	0.00%	
Arizona	1	0.04%	8(t)
Arkansas	0	0.00%	
California	1	0.04%	8(t)
Colorado	0	0.00%	
Connecticut	0	0.00%	
Delaware	33	1.39%	3
District of Col.	0	0.00%	
Florida	0	0.00%	
Georgia	0	0.00%	
Hawaii	1	0.04%	8(t)
Idaho	0	0.00%	
Illinois	0	0.00%	
Indiana	0	0.00%	
Iowa	0	0.00%	
Kansas	0	0.00%	
Kentucky	0	0.00%	
Louisiana	1	0.04%	8(t)
Maine	1	0.04%	8(t)
Maryland	14	0.59%	4
Massachusetts	0	0.00%	
Michigan	0	0.00%	
Minnesota	0	0.00%	
Mississippi	0	0.00%	
Missouri	0	0.00%	
Montana	0	0.00%	

State	Total	Percent	Rank
Nebraska	0	0.00%	
Nevada	0	0.00%	
New Hampshire	0	0.00%	
New Jersey	317	13.31%	2
New Mexico	0	0.00%	
New York	11	0.46%	5
North Carolina	0	0.00%	
North Dakota	0	0.00%	
Ohio	0	0.00%	
Oklahoma	0	0.00%	
Oregon	0	0.00%	
Pennsylvania	1,990	83.58%	1
Rhode Island	1	0.04%	8(t)
South Carolina	0	0.00%	
South Dakota	0	0.00%	
Tennessee	0	0.00%	
Texas	1	0.04%	8(t)
Utah	0	0.00%	
Vermont	0	0.00%	
Virginia	3	0.13%	7
Washington	0	0.00%	
West Virginia	0	0.00%	
Wisconsin	0	0.00%	
Wyoming	0	0.00%	
Armed Forces	0	0.00%	
International	6	0.25%	6
Total	2,381	100.00%	

*State at the time of admission.

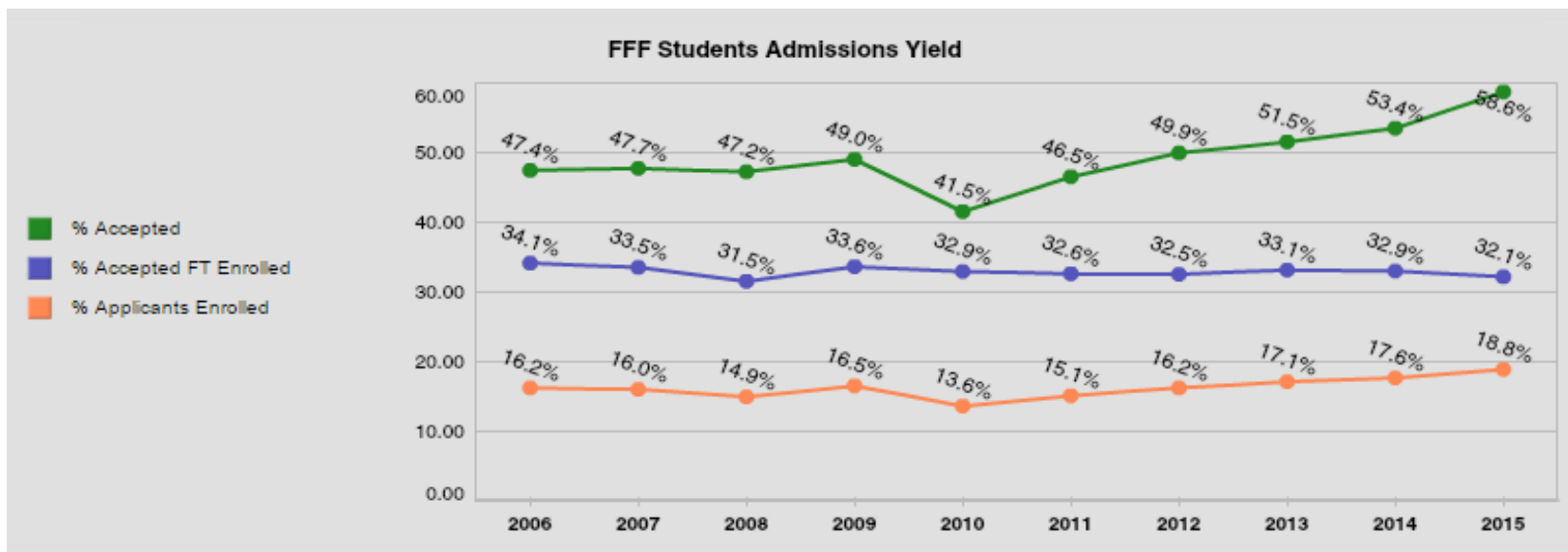
Admission Yield Statistics: Fall 2015

First-Time, Full Time, First Year Student Admission Yield

Year	# of Applicants	# Accepted	% Accepted	# Full-Time Enrolled	% Accepted Full-Time	% of Applicants
2006	11,669	5,530	47.4	1,885	34.1	16.2
2007	12,237	5,834	47.7	1,957	33.5	16.0
2008	13,353	6,317	47.2	1,993	31.5	14.9
2009	13,615	6,667	49.0	2,241	33.6	16.5
2010	15,123	6,268	41.5	2,062	32.9	13.6
2011	15,080	7,013	46.5	2,283	32.6	15.1
2012	14,356	7,161	49.9	2,326	32.5	16.2
2013*	13,438	6,922	51.5	2,292	33.1	17.1
2014*	13,291	7,108	53.5	2,344	33.0	17.6
2015*	12,625	7,408	58.7	2,381	32.1	18.9
5-YR Change	-16.5%	18.2%		15.5%		
1-YR Change	-5.0%	4.2%		1.6%		
5-YR Difference			17.2%		-0.8%	5.3%
1-YR Difference			5.2%		-0.9%	1.3%

*Starting Fall 2013, number of applicants includes completed applications only.

First Time, Full-Time, First Year Admission Yield : Fall 2015



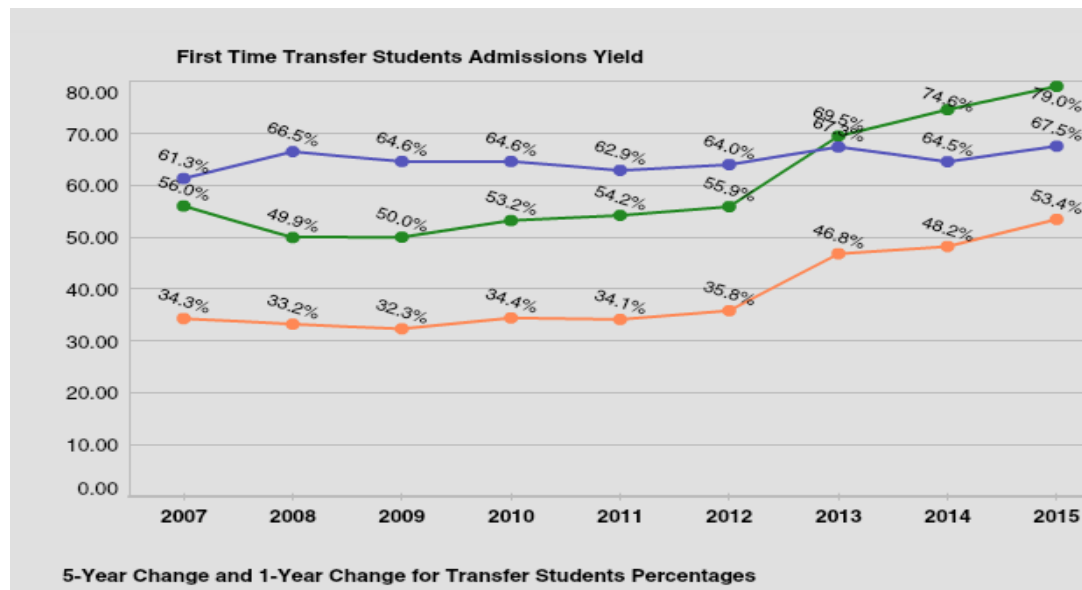
Starting Fall 2013, number of applicants includes completed applications only.

First Time Transfer Admission Yield : Fall 2015

Year	# of Applicants	# Accepted	% Accepted	# Enrolled	% of Accepted Enrolled	% of Applicants Enrolled
2007	2,839	1,589	56.0	974	61.3	34.3
2008	3,224	1,609	49.9	1,070	66.5	33.2
2009	3,639	1,821	50.0	1,176	64.6	32.3
2010	3,607	1,920	53.2	1,241	64.6	34.4
2011	3,742	2,029	54.2	1,276	62.9	34.1
2012	3,678	2,057	55.9	1,316	64	35.8
2013*	2,883	2,003	69.5	1,350	67.9	46.8
2014*	2,762	2,061	74.6	1,331	64.6	48.2
2015*	2,649	2,095	79.1	1,415	67.5	53.4
5-YR Change	-26.6%	9.1%		14.0%		
1-YR Change	-4.1%	1.6%		6.3%		
5-YR Difference			25.8%		2.9%	19.0%
1-YR Difference			4.4%		2.9%	5.2%

*Starting Fall 2013, number of applicants includes completed applications only.

First Time Transfer Admission Yield : Fall 2015



Starting Fall 2013, number of applicants includes completed applications only.



ENROLLMENT

Head Count Enrollment by Gender and Race/Ethnicity: Fall 2015

Gender	Undergraduate		Graduate		Total*
	Full-Time	Part-time	Full-Time	Part-time	
Male	5,132	636	227	452	6,447
Female	7,649	809	629	1,077	10,164
Total	12,781	1,445	856	1,529	16,611

Ethnicity	Undergraduate		Graduate		Total*
	Full-Time	Part-time	Full-Time	Part-time	
African American	1,266	224	161	158	1,809
Native American	10	4	1	1	16
Asian	259	47	16	46	368
Caucasian	10,056	1,016	557	1,239	12,868
Hawaiian/Pacific Islander	16	1	0	0	17
Hispanic	696	66	42	34	838
Non-Resident Alien	65	3	54	30	152
Multiracial	371	38	22	15	446
Not Supplied	42	46	3	6	97
Total	12,781	1,445	856	1,529	16,611

*These headcounts are unduplicated counts by primary major within student's career level and do not reflect IPEDS unduplicated headcount.

Head Count Enrollment by Degree Status and College: Fall 2015

Degree Status	Undergraduate		Graduate		Total*
	Full-Time	Part-time	Full-Time	Part-time	
Degree Seeking	11,228	1,145	811	1,240	14,424
Non-degree Seeking	1,553	300	45	289	2,187
Total	12,781	1,445	856	1,529	16,611

College	Undergraduate		Graduate		Total*
	Full-Time	Part-time	Full-Time	Part-time	
Arts and Sciences	3,899	401	180	325	4,805
Business and Public Affairs	3,467	371	289	342	4,469
Education	980	23	150	494	1,647
Health Sciences	2,301	332	210	205	3,048
Visual and Performing Arts	589	40	24	39	692
Educational Services**	1,545	278	3	124	1,950
Total	12,781	1,445	856	1,529	16,611

*These headcounts are unduplicated counts by primary major within student's career level and do not reflect IPEDS unduplicated headcount.

**Educational Services include non-degree and undeclared major students.

Enrollment by State at the Time of Admission: Fall 2012 to Fall 2015

State	Fall 2012			Fall 2013			Fall 2014			Fall 2015		
	UG	G	Total	UG	G	Total	UG	G	Total	UG	G	Total
Alabama	0	2	2	0	0	0	0	0	0	0	0	0
Alaska	1	1	2	1	0	1	1	0	1	1	0	1
Arizona	0	0	0	0	0	0	0	1	1	1	1	2
Arkansas	1	0	1	0	1	1	0	1	1	0	0	0
California	7	1	8	14	1	15	9	4	13	9	4	13
Colorado	1	0	1	2	1	3	0	1	1	0	0	0
Connecticut	11	2	13	15	0	15	15	0	15	6	1	7
Delaware	158	58	216	170	51	221	152	50	202	171	44	215
Florida	9	2	11	7	3	10	7	1	8	4	3	7
Georgia	0	1	1	3	1	4	2	0	2	1	0	1
Hawaii	0	0	0	1	1	2	2	0	2	2	0	2
Idaho	0	0	0	0	0	0	0	1	1	0	1	1
Illinois	1	1	2	0	0	0	0	0	0	0	0	0
Indiana	2	0	2	1	1	2	0	0	0	0	1	1
Iowa	0	0	0	2	1	3	1	1	2	2	0	2
Kentucky	0	3	3	0	0	0	0	0	0	0	1	1
Louisiana	0	1	1	0	1	1	0	1	1	1	1	2
Maine	2	0	2	2	0	2	1	1	2	1	1	2
Maryland	71	13	84	74	9	83	80	13	93	81	14	95
Massachusetts	7	3	10	5	4	9	4	5	9	4	4	8
Michigan	2	2	4	2	3	5	4	1	5	4	0	4
Minnesota	1	1	2	0	0	0	1	0	1	1	1	2
Missouri	0	1	1	0	1	1	0	1	1	0	0	0
Nevada	0	0	0	0	0	0	1	0	1	1	1	2
New Hampshire	2	0	2	2	0	2	2	1	3	2	1	3
New Jersey	1,243	57	1,300	1,389	67	1,456	1,343	61	1,404	1,355	60	1,415
New Mexico	0	2	2	0	0	0	0	0	0	1	0	1
New York	48	13	61	56	11	67	60	8	68	59	9	68
North Carolina	3	0	3	2	1	3	4	4	8	3	5	8
North Dakota	0	0	0	0	0	0	0	0	0	1	0	1

to be continued.....

Enrollment by State at the Time of Admission: Fall 2012 to Fall 2015 (continued)

STATE	Fall 2012			Fall 2013			Fall 2014			Fall 2015		
	UG	G	Total	UG	G	Total	UG	G	Total	UG	G	Total
Ohio	4	2	6	4	4	8	1	2	3	1	0	1
Oklahoma	0	0	0	0	0	0	0	0	0	0	0	0
Oregon	1	0	1	1	0	1	1	1	2	0	1	1
Pennsylvania	11,645	1,889	13,534	11,880	1,879	13,759	12,075	1,974	14,049	12,422	2,137	14,559
Rhode Island	0	1	1	0	1	1	0	1	1	1	0	1
South Carolina	1	1	2	2	1	3	2	1	3	1	1	2
Tennessee	0	0	0	1	0	1	1	0	1	0	0	0
Texas	3	0	3	4	0	4	2	0	2	3	2	5
Vermont	1	0	1	0	0	0	0	0	0	0	0	0
Virginia	14	5	19	17	5	22	16	5	21	16	8	24
Washington	2	0	2	2	0	2	0	0	0	0	0	0
Washington D.C.	2	0	2	1	1	2	1	2	3	1	2	3
West Virginia	3	0	3	1	1	2	1	0	1	1	0	1
Wisconsin	0	0	0	0	1	1	1	2	3	0	2	2
Armed Forces	2	0	2	2	0	2	1	0	1	0	0	0
International	53	52	105	50	83	133	58	97	155	69	79	148
Other	0	0	0	0	0	0	0	1	1	0	0	0
TOTAL	13,301	2,114	15,415	13,713	2,134	15,847	13,849	2,242	16,091	14,226	2,385	16,611
In-State	11,645	1,889	13,534	11,880	1,879	13,759	12,075	1,974	14,049	12,422	2,137	14,559
Out-of-State	1,656	225	1,881	1,833	255	2,088	1,774	268	2,042	1,804	248	2,052
Out-of-State %	12.45%	10.64%	12.20%	13.37%	11.95%	13.18%	12.81%	11.95%	12.69%	12.68%	10.40%	12.35%

Enrollment by County for Pennsylvania Residents: Fall 2015

Top 10 Counties* With Most Enrollments Ranked

County	Total	Percent	Rank
Adams	52	0.36%	
Allegheny	44	0.30%	
Armstrong	0	0.00%	
Beaver	5	0.03%	
Bedford	2	0.01%	
Berks	459	3.15%	7
Blair	4	0.03%	
Bradford	4	0.03%	
Bucks	1,425	9.79%	4
Butler	7	0.05%	
Cambria	3	0.02%	
Cameron	1	0.01%	
Carbon	29	0.20%	
Centre	13	0.09%	
Chester	3,761	25.83%	1
Clarion	3	0.02%	
Clearfield	3	0.02%	
Clinton	2	0.01%	
Columbia	19	0.13%	
Crawford	1	0.01%	
Cumberland	222	1.52%	
Dauphin	207	1.42%	
Delaware	2,525	17.34%	2
Elk	0	0.00%	

County	Total	Percent	Rank
Erie	5	0.03%	
Fayette	1	0.01%	
Franklin	35	0.24%	
Fulton	1	0.01%	
Greene	1	0.01%	
Huntingdon	3	0.02%	
Indiana	0	0.00%	
Jefferson	1	0.01%	
Juniata	6	0.04%	
Lackawanna	186	1.28%	
Lancaster	494	3.39%	6
Lawrence	1	0.01%	
Lebanon	70	0.48%	
Lehigh	317	2.18%	9
Luzerne	141	0.97%	
Lycoming	24	0.16%	
McKean	3	0.02%	
Mercer	1	0.01%	
Mifflin	1	0.01%	
Monroe	105	0.72%	
Montgomery	2,065	14.18%	3
Montour	4	0.03%	
Northampton	306	2.10%	10
Northumberland	22	0.15%	

County	Total	Percent	Rank
Perry	12	0.08%	
Philadelphia	1,414	9.71%	5
Pike	46	0.32%	
Potter	2	0.01%	
Schuylkill	79	0.54%	
Snyder	13	0.09%	
Somerset	1	0.01%	
Sullivan	1	0.01%	
Susquehanna	20	0.14%	
Tioga	5	0.03%	
Union	5	0.03%	
Venango	0	0.00%	
Warren	1	0.01%	
Washington	5	0.03%	
Wayne	26	0.18%	
Westmoreland	10	0.07%	
Wyoming	15	0.10%	
York	320	2.20%	8
Total	14,559	100.00%	

*County at the time of admission.

Head Count Enrollment: Fall 2010 to 2015: Five-Year Enrollment by Ethnicity and Gender

Undergraduate Students

Ethnicity	2011		2012		2013		2014		2015	
	Male	Female	Male	Female	Male	Female	Male	Female	Male	Female
White	4,412	6,216	4,480	6,434	4,492	6,646	4,460	6,572	4,523	6,549
African American	419	721	415	730	494	754	493	857	576	914
Hispanic	210	339	245	369	267	369	286	404	314	448
Asian	113	126	121	132	124	168	118	176	119	187
Hawaiian/Pacific Islander	2	1	2	5	3	5	2	12	7	10
Native American	9	17	6	13	5	10	3	11	1	13
NRA-International	19	29	19	29	17	24	20	21	25	43
Multiracial	78	86	100	126	134	188	145	218	167	242
Not Supplied	20	17	37	38	7	6	24	27	36	52
Total	5,282	7,552	5,425	7,876	5,543	8,170	5,551	8,298	5,768	8,458

Graduate Students

Ethnicity	2011		2012		2013		2014		2015	
	Male	Female	Male	Female	Male	Female	Male	Female	Male	Female
White	532	1,308	485	1,149	509	1,133	539	1,142	511	1,285
African American	64	167	77	159	79	177	86	209	86	233
Hispanic	11	42	18	39	17	47	18	49	20	56
Asian	24	34	24	33	18	39	18	44	15	47
Hawaiian/Pacific Islander		1		1	1		3			
Native American	2	1		4	1	4	1	3		2
NRA-International	19	28	14	39	25	38	39	46	34	50
Multiracial	5	16	6	14	10	18	13	19	9	28
Not Supplied	3	9	22	30	7	11	4	9	4	5
Total	660	1,606	646	1,468	667	1,467	721	1,521	679	1,706

Head Count Enrollment: Fall 2011 to 2015 Enrollment by College

Undergraduate Students

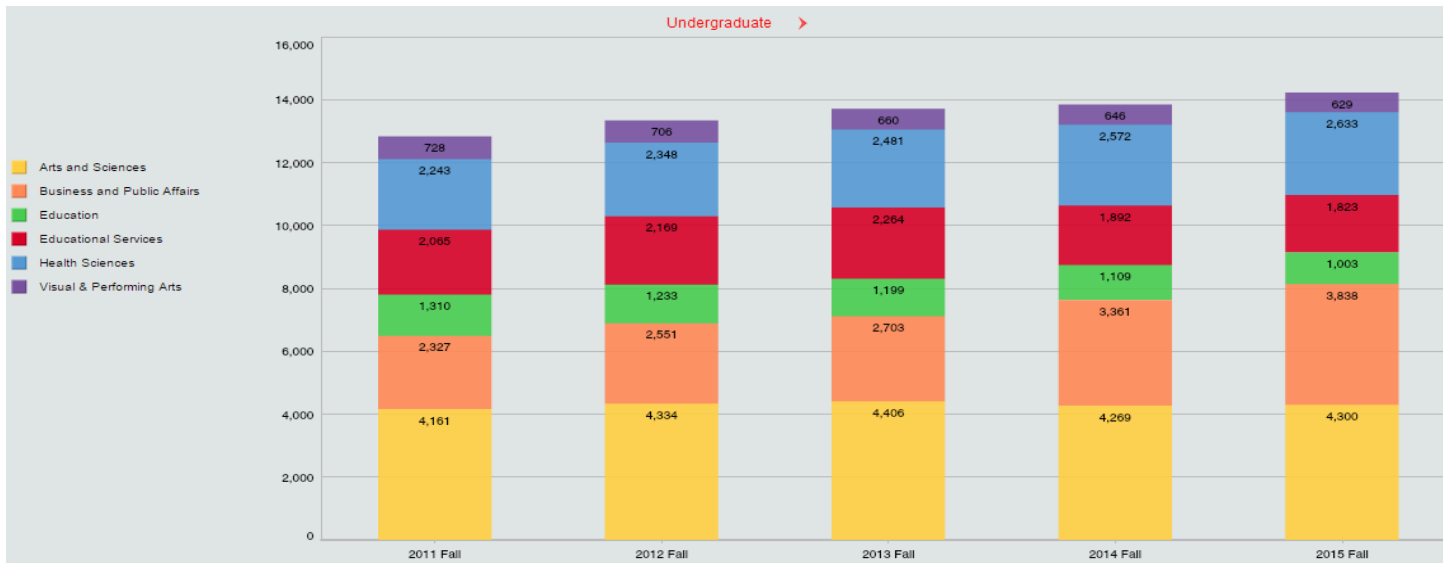
College	Career	2011	2012	2013	2014	2015
Arts and Sciences	URGD	4,161	4,334	4,406	4,269	4,300
Business and Public Affairs	URGD	2,327	2,511	2,703	3,361	3,838
Education	URGD	1,310	1,233	1,199	1,109	1,003
Health Sciences	URGD	2,243	2,348	2,481	2,572	2,633
Visual & Performing Arts	URGD	728	706	660	646	629
Educational Services*	URGD	2,065	2,169	2,264	1,892	1,823
Total		12,834	13,301	13,713	13,849	14,226

Graduate Students

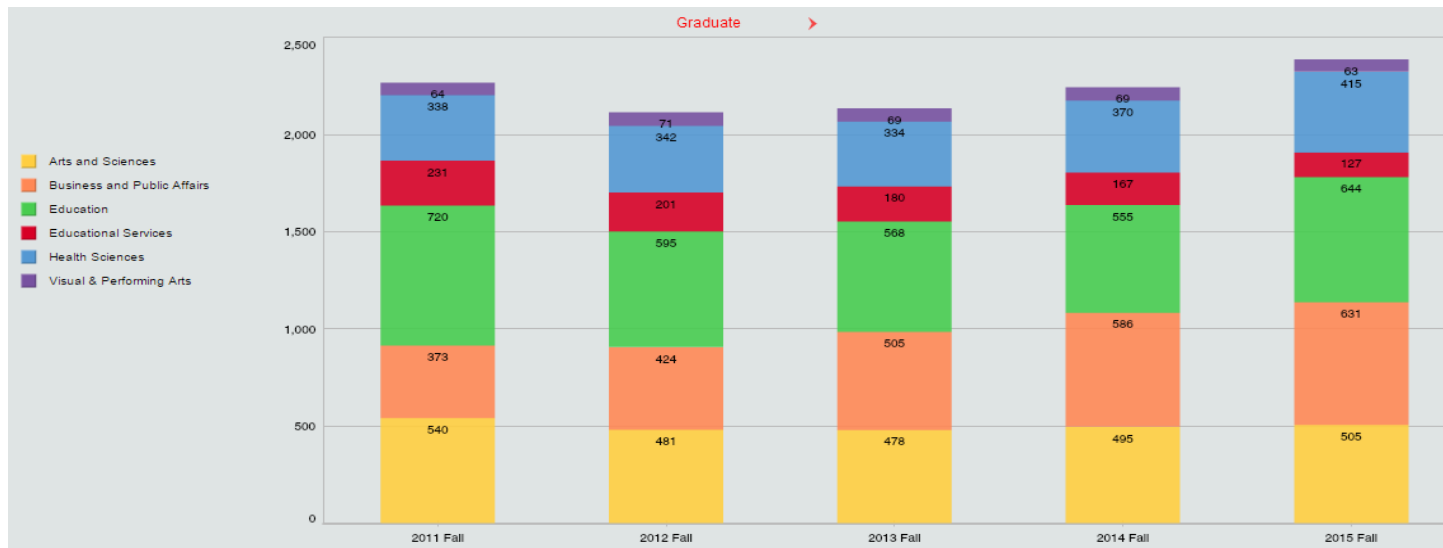
College	Career	2011	2012	2013	2014	2015
Arts and Sciences	GRAD	540	481	478	495	505
Business and Public Affairs	GRAD	373	424	505	586	631
Education	GRAD	720	595	568	555	644
Health Sciences	GRAD	338	342	334	370	415
Visual & Performing Arts	GRAD	64	71	69	69	63
Educational Services*	GRAD	231	201	180	167	127
Total		2,266	2,114	2,134	2,242	2,385

*Educational Services include non-degree and undeclared major students.

Head Count Enrollment: Fall 2011 to 2015 Enrollment by College : Five Falls

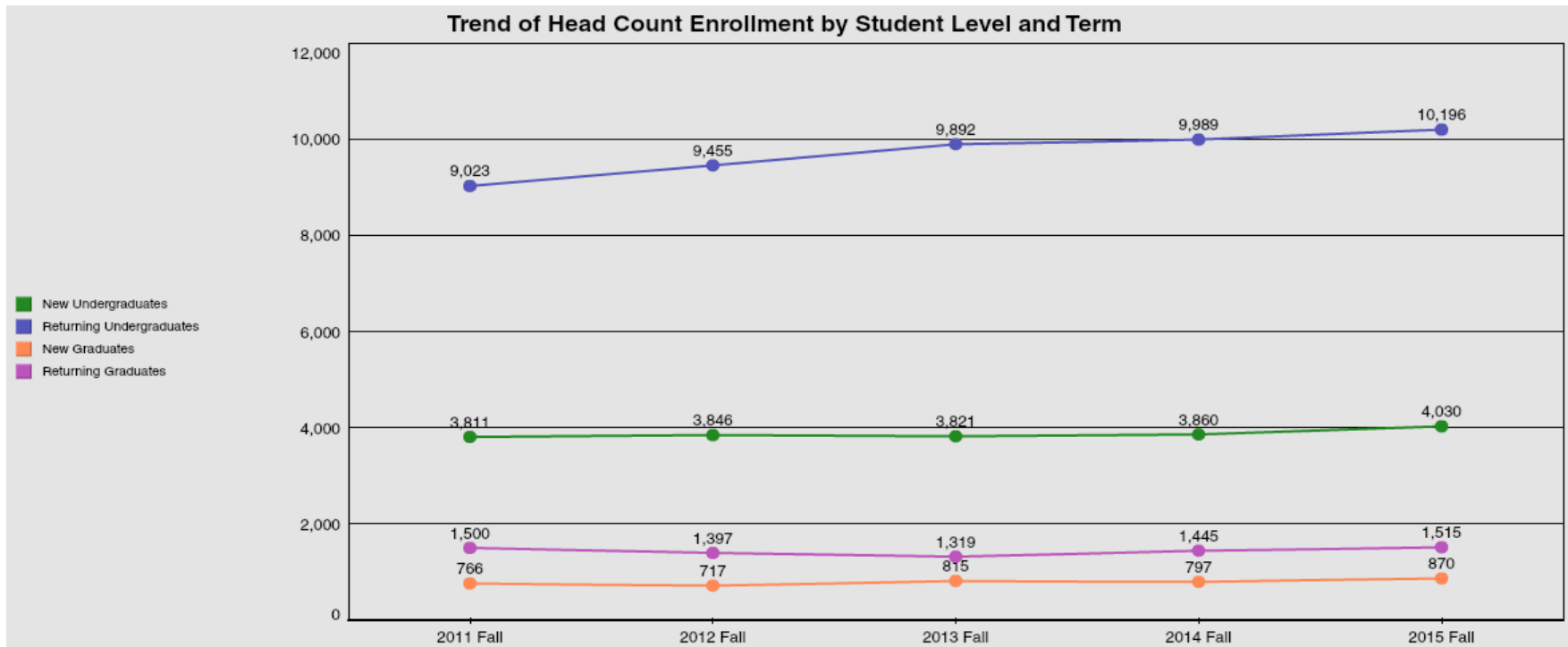


Note: Non-degree and undeclared major students are included in Educational Services.



Head Count Enrollment by Student Level: Fall 2010 to Fall 2015

Fall Semester	2010	2011	2012	2013	2014	2015	One Year Difference
Undergraduate							
New First Year Degree Seeking	2,067	2,292	2,334	2,298	2,351	2,395	44
New Transfer Degree Seeking	1,241	1,276	1,316	1,350	1,331	1,415	84
New Readmits Degree Seeking	87	104	98	76	107	100	-7
New Undergraduate Non Degree	140	139	98	97	71	120	49
Returning Undergraduate Degree Seeking First Year	710	565	604	657	555	596	41
Returning Undergraduate Degree Seeking Sophomore	2,358	2,414	2,432	2,585	2,650	2,617	-33
Returning Undergraduate Degree Seeking Junior	2,366	2,670	2,746	2,912	2,969	3,090	121
Returning Undergraduate Degree Seeking Senior	3,046	3,200	3,525	3,579	3,650	3,747	97
Returning Undergraduate Non Degree	219	174	148	159	165	146	-19
Graduate							
New Masters	566	557	533	621	612	686	74
New Doctorate	-	-	-	-	17	38	21
New Graduate Non Degree	234	209	184	194	168	146	-22
Returning Masters	1,154	1,189	1,163	1,132	1,211	1,287	76
Returning Doctorate	-	-	-	-	15	40	25
Returning Graduate Non Degree	304	311	234	187	219	188	-31
Total Enrollment	14,492	15,100	15,415	15,847	16,091	16,611	520



Credit Hours and Student FTE Enrollment FY 2010-11 to FY 2014-15

Student FTE Enrollment: FY 2010-11 to FY 2014-15

FTE Division	2010-11	2011-12	2012-13	2013-14	2014-15	One Year Difference
Lower Division Full-Time Equivalent Students	7,697.1	7,830.1	8,070.5	8,184.6	8,277.9	93.3
Upper Division Full-Time Equivalent Students	4,512.2	4,762.4	5,066.5	5,179.0	5,283.4	104.4
Graduate Division Full-Time Equivalent Students	1,538.1	1,466.0	1,405.7	1,466.8	1,566.9	100.1
Total Full-Time Equivalent Students	13,747.4	14,058.5	14,542.7	14,830.4	15,128.2	297.8

Credit Hours: FY 2010-11 to FY 2014-15

College	2010-11	2011-12	2012-13	2013-14	2014-15	One Year Difference
Arts & Sciences	201,594.0	214,760.0	223,408.0	226,390.0	226,815.0	425.0
Business and Public Affairs	62,636.0	66,512.0	72,822.0	76,213.0	83,919.0	7,706.0
Education	1,911.0	2,562.0	2,923.5	2,760.0	3,057.0	297.0
Health Sciences	45,471.0	42,496.0	40,114.0	39,302.0	37,559.0	-1,743.0
Visual and Performing Arts	58,188.0	59,061.5	60,464.5	64,313.0	66,164.0	1,851.0
Educational Services*	26,892.0	27,566.0	28,115.5	27,131.0	26,930.0	-201.0
Total University Credit Hours	396,692.0	412,957.5	427,847.5	436,109.0	444,444.0	8,335.0

*Educational Services include non-degree and undeclared major students.

Credit Hours by College and Course division For FY 2014-15

College	Lower	Upper	Total Undergraduate	Graduate	Total	% Graduate
Arts & Sciences	166,367.0	52,630.0	218,997.0	7,818.0	226,815.0	3.4%
Business and Public Affairs	29,400.0	43,605.0	73,005.0	10,914.0	83,919.0	13.0%
Education	7,175.0	20,915.0	28,090.0	9,469.0	37,559.0	25.2%
Health Sciences	25,672.0	32,171.0	57,843.0	8,321.0	66,164.0	12.6%
Visual and Performing Arts	18,452.5	7,393.5	25,846.0	1,084.0	26,930.0	4.0%
Educational Services*	1,270.0	1,787.0	3,057.0	0.0	3,057.0	0.0%
Total University Credit Hours	248,336.5	158,501.5	406,838.0	37,606.0	444,444.0	8.5%

*Educational Services include non-degree and undeclared students.

A large purple graphic element consisting of a vertical bar on the right side and two horizontal bars extending to the left from the top and bottom of the vertical bar, forming a partial frame around the title.

RETENTION AND GRADUATION

Retention and Graduation Rates for First-time, Full-Time, First-Year, Degree-Seeking Student Cohorts --University Summary

Fall Cohort	N 1st Fall	2nd Fall		3rd Fall		4th Fall		5th Fall				6th Fall				7th Fall			
		Cohort Retained		Cohort Retained		Cohort Retained		Cumulative Graduated within 4 yrs*		Cohort Retained		Cumulative Graduated within 5 yrs		Cohort Retained		Cumulative Graduated within 6 yrs		Cohort Retained	
		n	% 1F	n	% 1F	n	% 1F	n	% 1F	n	% 1F	n	% 1F	n	% 1F	n	% 1F	n	% 1F
2002	1766	1461	82.7	1290	73.0	1236	70.0	642	36.4	536	30.4	1049	59.4	97	5.5	1123	63.6	25	1.4
2003	1723	1466	85.1	1298	75.3	1207	70.1	685	39.8	481	27.9	1053	61.1	89	5.2	1121	65.1	21	1.2
2004	1870	1570	84.0	1361	72.8	1306	69.8	734	39.3	535	28.6	1155	61.8	95	5.1	1223	65.4	29	1.6
2005	1898	1607	84.7	1442	76.0	1378	72.6	814	42.9	528	27.9	1239	65.3	81	4.3	1299	68.4	26	1.4
2006	1883	1616	85.8	1467	77.9	1401	74.4	803	42.6	553	29.4	1233	65.5	93	4.9	1298	68.9	26	1.4
2007	1955	1650	84.4	1511	77.3	1428	73.0	857	43.8	536	27.4	1266	64.8	96	4.9	1346	68.8	27	1.4
2008	1992	1683	84.5	1517	76.2	1453	72.9	872	43.8	525	26.4	1271	63.8	108	5.4	1340	67.3	35	1.8
2009	2241	1909	85.2	1747	78.0	1693	75.5	954	42.6	670	29.9	1502	67.0	113	5.0	1585	70.7	36	1.6
2010	2060	1775	86.1	1638	79.4	1568	76.0	946	45.9	555	26.9	1384	67.1	88	4.3				
2011	2282	1950	85.4	1822	79.8	1733	75.9	1090	47.7	593	26.0								
2012	2326	2032	87.4	1882	80.9	1803	77.5												
2013	2291	2014	87.9	1885	82.2														
2014	2344	2060	87.9																
2015	2381																		

Note: Data is from Fall enrollment at census dates and completions files as reported to IPEDS. Includes degree sweeps and IPEDS exclusions through 10/2015.

Second-Year Retention Rates for First-Time, Full-Time, Degree-Seeking First Year by Race/Ethnicity

Fall Cohort	African American			Asian			Latino			Native American			Caucasian		
	N 1 st Fall	N 2 nd Fall	% Retained	N 1 st Fall	N 2 nd Fall	% Retained	N 1 st Fall	N 2 nd Fall	% Retained	N 1 st Fall	N 2 nd Fall	% Retained	N 1 st Fall	N 2 nd Fall	% Retained
2008	201	168	83.6	43	37	86.0	90	77	85.6	5	4	80.0	1647	1396	84.8
2009	177	151	85.3	39	34	87.2	85	64	75.3	6	6	100.0	1908	1631	85.5
2010	203	170	83.8	41	36	87.8	114	87	76.3	2	1	50.0	1643	1423	86.6
2011	191	154	80.6	30	26	86.7	163	133	81.5	1	1	100.0	1837	1586	86.4
2012	211	181	85.8	48	43	89.6	136	114	83.8	0	0	0.0	1881	1652	87.8
2013	231	193	83.5	48	44	91.7	122	102	83.6	1	1	100.0	1810	1604	88.6
2014	232	190	81.9	48	42	87.5	119	106	89.1	1	1	100.0	1843	1638	88.9
2015	251			38			159			1			1831		

Note: Data is from Fall enrollment at census dates and completions files as reported to IPEDS. Includes degree sweeps and IPEDS exclusions through 10/2015.

Second-Year Retention Rates for First-Time, Full-Time, Degree-Seeking First Year by Gender

Fall Cohort	Male			Female		
	N 1 st Fall	N 2 nd Fall	% Retained	N 1 st Fall	N 2 nd Fall	% Retained
2008	761	635	83.4	1231	1048	85.1
2009	888	745	83.9	1353	1164	86.0
2010	765	643	83.8	1295	1132	87.4
2011	904	754	83.4	1378	1196	86.7
2012	869	764	87.9	1457	1268	87.0
2013	809	687	84.8	1482	1327	89.5
2014	892	790	88.6	1452	1270	87.5
2015	888			1493		

Note: Data is from Fall enrollment at census dates and completions files as reported to IPEDS. Includes degree sweeps and IPEDS exclusions through 10/2015.

Four Year Graduation Rates for First-Time, Full-Time First Year by Race/Ethnicity

Fall Cohort	African American			Asian			Latino			Native American			Caucasian		
	N 1st Fall	N Grad	% Grad	N 1st Fall	N Grad	% Grad	N 1st Fall	N Grad	% Grad	N 1st Fall	N Grad	% Grad	N 1st Fall	N Grad	% Grad
2006	171	43	25.1	41	14	34.1	66	18	27.3	5	1	20.0	1596	727	45.6
2007	190	45	23.7	39	18	46.2	61	14	23.0	9	4	44.4	1655	776	46.9
2008	201	38	18.9	43	20	46.5	90	33	36.7	5	2	40.0	1647	777	47.2
2009	177	29	16.4	39	11	28.2	85	20	23.5	6	1	16.7	1908	881	46.2
2010	203	44	21.7	41	16	39.0	114	34	29.8	2	1	50.0	1643	825	50.2
2011	191	47	24.6	30	15	50.0	163	55	33.7	1	1	100.0	1837	947	51.6

Note: Data is from Fall enrollment at census dates and completions files as reported to IPEDS. Includes degree sweeps and IPEDS exclusions through 10/2015.

Six Year Graduation Rates for First-Time, Full-Time First Year by Race/Ethnicity

Fall Cohort	African American			Asian			Latino			Native American			Caucasian		
	N 1st Fall	N Grad	% Grad	N 1st Fall	N Grad	% Grad	N 1st Fall	N Grad	% Grad	N 1st Fall	N Grad	% Grad	N 1st Fall	N Grad	% Grad
2004	164	87	53.0	35	20	57.1	58	35	60.3	4	1	25.0	1608	1080	67.2
2005	170	98	57.6	38	25	65.8	66	40	60.6	3	1	33.3	1618	1135	70.1
2006	171	98	57.3	41	24	58.5	66	33	50.0	5	3	60.0	1596	1136	71.2
2007	190	98	51.6	39	28	71.8	61	32	52.5	9	7	77.8	1655	1181	71.4
2008	201	110	54.7	43	31	72.1	90	62	68.9	5	4	80.0	1647	1130	68.6
2009	177	86	48.6	39	26	66.7	85	45	52.9	6	4	66.7	1908	1408	73.8

Note: Data is from Fall enrollment at census dates and completions files as reported to IPEDS. Includes degree sweeps and IPEDS exclusions through 10/2015.

Four Year Graduation Rates for First-Time, Full-Time First Year by Gender

Fall Cohort	Male			Female		
	N 1st Fall	4 Yr Grad		N 1st Fall	4 Yr Grad	
		#	%		#	%
2006	683	196	28.7	1200	607	50.6
2007	740	235	31.8	1215	622	51.2
2008	761	232	30.5	1231	640	52.0
2009	888	277	31.2	1353	677	50.0
2010	765	263	34.3	1295	683	52.7
2011	904	329	36.4	1378	761	55.2

Note: Data is from Fall enrollment at census dates and completions files as reported to IPEDS. Includes degree sweeps and IPEDS exclusions through 10/2015.

Six Year Graduation Rates for First-Time, Full-Time First Year by Gender

Fall Cohort	Male			Female		
	N 1st Fall	6Yr Grad		N 1st Fall	6 Yr Grad	
		#	%		#	%
2004	656	382	58.2	1214	841	69.3
2005	679	419	61.7	1219	880	72.2
2006	683	401	58.7	1200	897	74.8
2007	740	455	61.4	1215	891	73.3
2008	761	463	60.8	1231	877	71.2
2009	888	579	65.2	1353	1006	74.4

Note: Data is from Fall enrollment at census dates and completions files as reported to IPEDS. Includes degree sweeps and IPEDS exclusions through 10/2015.

A large purple graphic element consisting of a thick horizontal bar at the top and a vertical bar on the right side, forming an L-shape. A white rectangular box with a black border is positioned over the horizontal bar, containing the text.

ACADEMIC DEGREE AND CERTIFICATE PROGRAMS

Undergraduate Degree and Certificate Programs - Fall 2015

College of Arts and Sciences

BA American Studies
 BA Anthropology
 BA Biology
 BA Communication Studies
 BA English: Literature
 BA English: Writings
 BA History
 BA Languages & Cultures: French
 BA Languages & Cultures: German
 BA Languages & Cultures: Russian
 BA Languages & Cultures: Spanish
 BA Latin
 BA Liberal Studies: Arts and Sciences
 BA Liberal Studies: Career Preparation
 BA Literature
 BA Mathematics
 BA Philosophy
 BA Philosophy:Religious Studies
 BA Psychology
 BA Sociology
 BA Women's and Gender Studies
 BS Biochemistry
 BS Biology
 BS Biology: Cell and Molecular
 BS Biology: Ecology and Conservation
 BS Biology: Marine Science
 BS Biology: Medical Technology
 BS Biology: Microbiology
 BS Chemistry
 BS Chemistry-Biology
 BS Computer Science
 BS Forensic & Toxicological Chemistry
 BS Geoscience - Geology
 BS Geoscience : Earth Systems
 BS Liberal Studies: Pharmaceutical Product Dev
 BS Liberal Studies: Professional Studies Track
 BS Liberal Studies: Science-Math

College of Arts and Sciences (cont.)

BS Mathematics: Actuarial Science
 BS Mathematics: Computational Mathematics
 BS Mathematics: Industrial Mathematics
 BS Mathematics: Mathematical Finance
 BS Mathematics: Pure Mathematics
 BS Mathematics: Statistics
 BS Physics
 BS Physics-Engineering
 BSED Biology
 BSED Chemistry
 BSED Earth-Space Science
 BSED Earth-Space Science : Geology
 BSED English: Literature
 BSED English: Writings
 BSED Mathematics
 BSED Physics
 Certificate Computer Security
 Certificate TESL
 TC Biology
 TC Chemistry
 TC Communications
 TC Earth-Space Science
 TC English
 TC French
 TC General Science
 TC German
 TC Latin
 TC Mathematics
 TC Physics
 TC Russian
 TC Social Studies - History
 TC Spanish

College of Business and Public affairs

BA Geography
 BA Geography: Environmental
 BA Geography:Geographic Information Systems
 BA Geography:Urban/Regional Planning
 BA Political Science
 BA Political Science: International Relations
 BA Political Science:Applied Public Policy
 BS Accounting
 BS Business Management
 BS Criminal Justice
 BS Criminal Justice (Philadelphia)
 BS Economics
 BS Finance
 BS Marketing
 BS Pre-Business Accounting
 BS Pre-Business: Eco-Finance
 BS Pre-Business: Management
 BS Pre-Business: Marketing
 BSW Social Work
 BSW Social Work (Philadelphia)
 Teacher Education Social Studies - Geography Teaching Certification
 Teacher Education Social Studies - Political Science Teaching Certification

College of Education

BSED Early Childhood Education
 BSED Early Grades Prep, PK-4 Education
 BSED Elementary Education
 BSED Middle Grades Prep, 4-8 Education
 BSED Special Education: 7-12
 BSED Special Education: PK-8
 TC Early Childhood Education
 Certificate Education for Sustainability

Undergraduate Degree and Certificate Programs - Fall 2015 (continued)

College of Health

BA Communicative Disorders
 BS Athletic Training
 BS Exercise Science
 BS Exercise Science: Pre-Chiropractic
 BS Exercise Science: Pre-Occupational Therapy
 BS Exercise Science: Pre-Physical Therapy
 BS Health and Physical Education
 BS Health Science: General
 BS Health Science: Respiratory Care
 BS Nutrition and Dietetics
 BS Public Health: Environmental
 BS Public Health: Health Promotion
 BSN Nursing
 BSN Nursing: 2nd Degree
 BSN Nursing: RN
 BSN Nursing: RN (Philadelphia)
 TC Health & Physical Educ
 TC Speech Correction
 Pre-Grad Program Certificate
 Certificate Athletic Training

College of Visual and Performing Arts

BA Studio Arts
 BA Theatre
 BA Theatre and Dance: Dance
 BA Theatre: Design, Technology, Management
 BA Theatre: Musical Theatre
 BA Theatre: Performance
 BFA Studio Arts
 BFA Graphic & Interior Design
 BM Music Education: Instrument
 BM Music Education: Keyboard
 BM Music Education: Voice
 BM Music: Elective Studies
 BM Music: History
 BM Music: Performance - Instrument
 BM Music: Performance - Jazz
 BM Music: Performance - Keyboard
 BM Music: Performance - Voice
 BM Music: Theory & Composition
 TC Music Education

Educational Services

Undeclared Pre-major

Note : TC is recommended for Teacher Certification.

Graduate Degree and Certificate Programs - Fall 2015

College of Arts and Sciences

MA Communication Studies (Philadelphia)
 MA Communication Studies
 MA English
 MA English - Non-Thesis Option
 MA French
 MA Geoscience
 MA History
 MA Holocaust and Genocide Studies
 MA Languages & Cultures in French
 MA Languages & Cultures in German
 MA Languages & Cultures in Spanish
 MA Mathematics
 MA Philosophy: Applied Ethics
 MA Philosophy: General
 MA Psychology - General
 MA Psychology - Clinical
 MA Psychology - Industrial/Organizational
 MA Spanish
 MA TESL
 MED French
 MED German
 MED History
 MED Spanish
 MS Applied Statistics
 MS Biology
 MS Biology : Thesis
 MS Computer Science
 MS Applied and Computational Math
 MSA Leadership for Women
 MSA Long-Term Health Care
 MPA Leadership for Women
 MPA Long-Term Health Care
 Prof Growth Biology
 Prof Growth Chemistry
 Prof Growth Communications

College of Arts and Sciences (cont.)

Prof Growth Computer Science
 Prof Growth English
 Prof Growth Foreign language French
 Prof Growth Foreign language Spanish
 Prof Growth History
 Prof Growth Liberal Studies
 Prof Growth Mathematics
 Prof Growth Philosophy
 Prof Growth Physical Science
 Prof Growth Psychology General
 Prof Growth TSEL
 TC Biology
 TC Chemistry
 TC Earth-Space Science
 TC English
 TC French
 TC General Science
 TC German
 TC Latin
 TC Mathematics
 TC Physics
 Certificate Applied Statistics
 Certificate Holocaust and Genocide Studies
 Certificate Business Ethics
 Certificate Computer Security
 Certificate Healthcare Ethics
 Certificate Information Systems
 Certificate Leadership for Women
 Certificate Publishing
 Certificate TESL
 Graduate Certificate Web Technology
 Letter of Completion: Clinical Mental Health
 TC Social Studies - History
 TC Spanish

College of Business and Public Affairs

Doctor of Public Administration
 MA Geography
 MBA Economics-Finance
 MBA Executive
 MBA General
 MBA Management
 MBA Technology - Electronic Commerce
 MPA Human Resource Management
 MPA Individualized Program
 MPA Nonprofit Administration
 MPA Public Administration
 MPA Regional Planning
 MPA Training and Development
 MS Criminal Justice
 MS Criminal Justice (Philadelphia)
 MSA Human Resource Management
 MSA Public Administration
 Prof Growth Criminal Justice
 Prof Growth Geography
 Prof Growth Government
 Prof Growth Political Science
 Prof Growth Social work
 MSW Social Work
 MSW Social Work (Philadelphia)
 MSW Social Work Advanced Standing
 Certificate Business
 Certificate Business (Philadelphia)
 Certificate Human Resource Management
 Certificate Administration
 Certificate Geographic Information Systems
 Certificate Non Profit Administration
 Certificate Urban and Regional Planning

Graduate Degree and Certificate Programs - Fall 2015 (continued)

College of Education

MED Applied Studies in Teaching and Learning
 MED Applied Studies in Teaching and Learning (Philadelphia)
 MED Applied Studies in Teaching and Learning (sprf)
 MED Counseling - School
 MED Early Childhood Education
 MED Reading
 MED Reading (Philadelphia)
 MED Secondary Education
 MED Special Education
 MED Special Education (online)
 MED Special Education (Philadelphia)
 MS - Higher Education Counseling/Student Affairs
 Certificate of Advanced Graduate Professional Growth
 Counselling Professional Growth
 Elementary Education Professional Growth
 Reading Professional Growth
 Special Education Professional Growth
 Secondary Education Professional Growth
 TC Counseling
 TC Early Childhood Education
 TC Early Grades Preparation
 TC Elementary Education
 TC Middle Grades Preparation
 TC Post Baccalaureate Grades 4-8
 TC Post Baccalaureate PreK-4
 TC Reading
 TC Reading (Philadelphia)
 TC Secondary Education
 TC Special Education: 7-12
 TC Special Education 7-12 (Philadelphia)
 TC Special Education 7-12 (Online)
 TC Special Education: K-12
 TC Special Education: PK-8
 TC Special Education: PK-8 (Philadelphia)
 TC Special Education: PK-8 (Online)
 Certificate Autism
 Certificate Education for Sustainability

College of Education (cont.)

Certificate Educational Technology
 Certificate Entrepreneurial Education
 Certificate Literacy Coaching
 Certificate Literacy
 Certificate Special Education
 Certificate Higher Ed Counseling/Student Affairs
 Certificate Universal Design Learning
 Letter of Completion: Professional Counseling
 Licensure Prep

College of Health

Doctorate of Nursing Practice
 MA Communicative Disorders
 MED Health - School Health
 MS Exercise and Sport Physiology
 MS Exercise and Sport Physiology: Athletic Training
 MS Health and Physical Education - Sport/Exercise Physiology
 MS Physical Education
 MSA Sport and Athletic Administration
 MSN Nursing
 MSN Nursing: Advanced Practice-Adult Gerontology
 MSN Public Health Nursing: Administration
 MSN Public Health Nursing: Education
 MSN Public Health Nursing: Integrative Health
 MPA Sport Management and Athletics
 MPH Public Health: Community Health
 MPH Public Health: Integrative Health
 MPH Public Health: Management
 MPH: Environmental Health
 MPH: Health Administration
 MPH: Nutrition
 TC Health & Physical Education
 TC School Nursing
 TC Speech Correction
 Certificate Adapted Physical Education
 Certificate Emergency Preparedness-Health

College of Health (cont.)

Certificate Gerontology
 Certificate Health Care Administration
 Certificate Health: Integrative Health
 Certificate School Nursing
 Certificate Sports Management and Athletics
 Communicative Disorders Prof Growth
 Health Education Prof Growth
 Health Prof Growth
 Nursing Prof Growth
 Physical education Prof Growth

College of Visual and Performing Arts

MA Music History
 MM Composition
 MM Music Education: Kodaly
 MM Music Education: Music Technology
 MM Music Education: Performance
 MM Music Education: Orff- Schul
 MM Music Education: Research
 MM Music Education: Technology
 MM Music Performance
 MM Music Performance - Instrument
 MM Music Performance- Choral Conducting
 MM Music Performance - Organ
 MM Music Performance - Piano
 MM Music Performance - Vocal
 MM Music: History and Literature
 MM Music: Piano Pedagogy
 MM Music: Theory & Composition
 TC Music Education
 Certificate Kodaly Methodology
 Certificate Music Technology
 Certificate Orff-Schulwerk
 Certificate Piano Pedagogy
 Music General Professional Growth

Professional and Program Accreditations

West Chester University is accredited by
The Middle States Commission on Higher Education (MSCHE)

Accreditation Board for Engineering and Technology (ABET)
Accreditation Council for Continuing Medical Education (ACCME)
Accreditation Council for Education in Nutrition and Dietetics (ACEND)
American Chemical Society (ACS)
American Council on the Teaching of Foreign Languages (ACTFL) - Recognized Programs
American Orff Schulwerk Association (AOSA)
American Speech-Language-Hearing Association (ASHA)
Association to Advance Collegiate Schools of Business (AACSB)
Association for Middle Level Education (AMLE) - Recognized Programs
Commission on Accreditation of Allied Health Education Programs (CAAHEP) - Pending Renewal
Commission on Accreditation of Athletic Training Education (CAATE)
Commission on Collegiate Nursing Education (CCNE)
Committee on Accreditation for Respiratory Care (CoARC)
Council on Education for Public Health (CEPH)
Council for Exceptional Children (CEC) - Recognized Programs
Council on Social Work Education (CSWE)

Professional and Program Accreditations (Continued)

Council for Accreditation of Counseling and Related Educational Programs (CACREP)
Forensic Science Education Programs Accreditation Commission (FEPAC)
International Literacy Association (ILA) - Recognized Programs
National Association of Schools of Music (NASM)
National Association for the Education of Young Children (NAEYC) - Recognized Programs
National Association of Schools of Art and Design (NASAD)
National Association of Schools of Theatre (NAST)
National Council for the Accreditation of Teacher Education (NCATE)
National Council for the Social Studies (NCSS) - Recognized Programs
National Council of Teachers for Mathematics (NCTM) - Recognized Programs
National Council of Teachers of English (NCTE) - Recognized Programs
National Science Teachers Association (NSTA) - Recognized Programs
National Environmental Health Science and Protection Accreditation Council (EHAC)
Network of Schools of Public Policy, Affairs, and Administration (NASPAA)
Organization of American Kodaly Educators (OAKE)
Pennsylvania Department of Education (PDE)
Society of Health and Physical Educators (SHAPE) - Recognized Programs



DEGREES CONFERRED

The following counts include only Baccalaureate (Primary and Secondary Major) and Master's degrees.

Academic Plan		Degree Year					
		2010-11	2011-2012	2012-13	2013-14	2014-15	
College of Arts and Sciences							
Anthropology and Sociology							
Undergraduate		Anthropology BA	11	8	20	12	20
		Sociology BA	23	35	51	59	43
		Total Undergraduate	34	43	71	71	63
Graduate		Long-Term Health Care MSA	1	0	1	0	0
		Long-Term Health Care MPA	0	1	0	0	0
		Total Graduate	1	1	1	0	0
Department Totals			35	44	72	71	63
Biology							
Undergraduate		Biology BA	1	3	0	1	1
		Biology BSED	9	7	7	8	6
		Biology BS	36	39	42	23	46
		Biology: Microbiology BS	4	3	10	11	8
		Biology: Ecology BS	4	9	9	9	11
		Biology: Marine Science	-	-	-	-	3
		Biology: Medical Technology BS	3	2	3	2	2
		Biology: Cell & Molecular BS	20	22	13	21	33
		Total Undergraduate	77	85	84	75	110

Academic Plan		Degree Year				
		2010-11	2011-2012	2012-13	2013-14	2014-15
Biology						
	Graduate					
	Biology MS	3	2	8	6	7
	Biology - Thesis MS	3	5	7	4	1
	Total Graduate	6	7	15	10	8
	Department Totals	83	92	99	85	118
Chemistry						
	Undergraduate					
	Chemistry BSED	1	0	4	1	2
	Chemistry-Biology * BS	9	13	13	12	9
	Chemistry BS	2	4	12	12	13
	Biochemistry BS	2	6	9	4	5
	Foreign & Toxicology Chemistry BS	6	7	11	11	9
	Total Undergraduate	20	30	49	40	38
	Department Totals	20	30	49	40	38
Communications Studies						
	Undergraduate					
	Communication Studies BA	142	119	160	139	155
	Communication-Com/Med BSED	0	-	-	-	-
	Total Undergraduate	142	119	160	139	155
	Graduate					
	Communication Studies MA	18	7	11	9	10
	Total Graduate	18	7	11	9	10
	Department Totals	160	126	171	148	165

Academic Plan		Degree Year				
		2010-11	2011-2012	2012-13	2013-14	2014-15
Computer Science						
	Undergraduate					
	Computer Science BS	27	17	23	45	27
	Total Undergraduate	27	17	23	45	27
	Graduate					
	Computer Science MS	7	7	5	6	13
	Total Graduate	7	7	5	6	13
	Department Totals	34	24	28	51	40
Economics						
	Undergraduate					
	Finance BS	-	-	-	-	1
	Total Undergraduate	-	-	-	-	1
	Department Totals	-	-	-	-	1
English						
	Undergraduate					
	Literature BA	0	0	0	0	0
	English BA: Literature	37	25	24	30	33
	English BA: Writings	36	36	43	47	63
	English BSED: Literature	27	22	30	36	14
	English BSED: Writings	11	8	10	18	10
	Total Undergraduate	111	91	107	131	120
	Graduate					
	English MA	12	28	24	38	25
	TESL MA	13	10	10	7	11
	English - Non-Thesis Option MA	0	0	0	0	0
	Total Graduate	25	38	34	45	36
	Department Totals	136	129	141	176	156

Academic Plan	Degree Year				
	2010-11	2011-2012	2012-13	2013-14	2014-15
Geology & Astronomy					
Undergraduate					
Earth-Space Science BSED	7	5	7	4	4
Earth-Space Science - Geology BSED	0	0	0	0	0
Geoscience - Earth Systems BS	1	14	13	11	17
Geoscience: Geology BS	3	9	4	8	5
Geoscience: Environ Geoscience BS	0	0	0	0	0
Total Undergraduate	11	28	24	23	26
Graduate					
Geoscience MA	11	8	6	11	7
Total Graduate	11	8	6	11	7
Department Totals	22	36	30	34	33
Foreign Language					
Undergraduate					
French BA	8	6	9	8	7
German BA	5	2	10	3	7
Latin BA	2	0	1	2	0
Russian BA	1	4	6	3	5
Spanish BA	12	21	28	22	19
Languages and Cultures: Russian	-	-	-	-	1
French BSED	0	0	0	0	0
German BSED	0	0	0	0	0
Spanish BSED	0	0	0	0	0
Total Undergraduate	28	33	54	38	39

Academic Plan		Degree Year				
		2010-11	2011-2012	2012-13	2013-14	2014-15
Foreign Language (continued)						
	Graduate					
	French MA	7	6	5	2	5
	Spanish MA	2	3	0	3	3
	French MED	0	1	2	2	2
	Spanish MED	2	2	1	1	0
	Total Graduate	11	12	8	8	10
	Department Totals	39	45	62	46	49
History						
	Undergraduate					
	American Studies BA	1	4	-	-	-
	History: American Studies BA	-	-	1	1	1
	History BA	87	107	101	94	86
	Total Undergraduate	88	111	102	95	87
	Graduate					
	History MA	11	6	2	9	6
	Holocaust & Genocide Studies MA	7	4	2	8	5
	History MED	2	0	0	0	0
	Total Graduate	20	10	4	17	11
	Department Totals	108	121	106	112	98
Liberal Studies						
	Undergraduate					
	Liberal Studies: Arts & Science BA	28	35	45	22	30
	Liberal Studies: Career Pre BA	1	0	0	0	0

Academic Plan		Degree Year				
		2010-11	2011-2012	2012-13	2013-14	2014-15
Liberal Studies (continued)						
	Undergraduate					
	Pharmaceutical Product Dev BS	15	7	14	11	14
	Liberal Studies: Science /Math BS	10	9	12	6	9
	Liberal Studies: Profession BS	202	221	206	240	214
	Total Undergraduate	256	272	277	279	267
	Department Totals	256	272	277	279	267
Mathematics						
	Undergraduate					
	Mathematics BA	2	3	8	4	3
	Mathematics: Actuarial Science BS	6	4	3	15	15
	Mathematics-Computer Science BA	0	0	0	0	0
	Mathematics : Finance BS	-	2	2	6	6
	Mathematics BSED	17	18	14	24	26
	Mathematics: Industrial BS	1	2	2	1	3
	Mathematics: Computational BS	1	0	4	1	3
	Mathematics: Pure Mathematics	-	-	-	1	3
	Mathematics: Statistics BS	2	3	13	5	13
	Total Undergraduate	29	32	46	57	72
	Graduate					
	Mathematics MA	5	10	5	14	9
	Applied Statistics MS	24	15	24	22	25
	Total Graduate	29	25	29	36	34
	Department Totals	58	57	75	93	106

Academic Plan		Degree Year				
		2010-11	2011-2012	2012-13	2013-14	2014-15
Philosophy						
	Undergraduate					
	Philosophy BA	10	10	14	20	10
	Philosophy-Religious Studies BA	1	4	2	2	1
	Total Undergraduate	11	14	16	22	11
	Graduate					
	Philosophy MA: Applied Ethics	1	0	0	1	0
	Philosophy MA: General	7	3	5	6	5
	Total Graduate	8	3	5	7	5
	Department Totals	19	17	21	29	16
Physics						
	Undergraduate					
	Physics BSED	2	2	2	1	4
	Physics BS	1	8	8	5	4
	Physics-Engineering BS	2	2	1	3	3
	Total Undergraduate	5	12	11	9	11
	Department Totals	5	12	11	9	11
Psychology						
	Undergraduate					
	Psychology BA	151	157	186	212	258
	Total Undergraduate	151	157	186	212	258

Academic Plan		Degree Year				
		2010-11	2011-2012	2012-13	2013-14	2014-15
Psychology (continued)						
	Graduate					
	Psychology: Clinical MA	18	15	24	16	11
	Psychology: General MA	1	2	4	1	7
	Psychology: Industrial MA	10	11	11	20	20
	Total Graduate	29	28	39	37	38
	Department Totals	180	185	225	249	296
Women's Studies						
	Undergraduate					
	Women's Studies BA	10	11	7	12	5
	Total Undergraduate	10	11	7	12	5
	Graduate					
	Leadership for Women MSA	0	0	0	0	0
	Leadership for Women MPA	0	0	0	0	0
	Total Graduate	0	0	0	0	0
	Department Totals	10	11	7	12	5
College of Arts and Sciences Undergraduate Totals		1,000	1,055	1,217	1,248	1,290
College of Arts and Sciences Graduate Totals		165	146	157	186	172
College of Arts and Sciences Totals		1,165	1,201	1,374	1,434	1,462
College of Business and Public Affairs						
	Accounting					
	Undergraduate					
	Accounting BS	99	77	75	95	98
	Total Undergraduate	99	77	75	95	98
	Department Totals	99	77	75	95	98

Academic Plan		Degree Year					
		2010-11	2011-2012	2012-13	2013-14	2014-15	
<i>Criminal Justice</i>							
	Undergraduate						
		Criminal Justice BS	87	84	108	103	109
		Total Undergraduate	87	84	108	103	109
	Graduate						
		Criminal Justice - Thesis MS	0	0	0	0	0
		Criminal Justice MS	25	20	18	16	19
		Criminal Justice MS (Philadelphia)	-	-	-	-	2
		Total Graduate	25	20	18	16	21
	Department Totals		112	104	126	119	130
<i>Economics and Finance</i>							
	Undergraduate						
		Economics BS	13	27	36	36	42
		Finance BS	88	94	119	128	167
		Total Undergraduate	101	121	155	164	209
	Graduate						
		Bus Admin: Economics-Finance MBA	0	0	0	0	0
		Total Graduate	0	0	0	0	0
	Department Totals		101	121	155	164	209
<i>Geography</i>							
	Undergraduate						
		Geography BA	4	4	7	2	2
		Geography: Environmental BA	2	3	4	3	4
		Geography-Urban/Regional PI BA	3	5	2	6	2

Academic Plan		Degree Year				
		2010-11	2011-2012	2012-13	2013-14	2014-15
Geography (continued)						
	Undergraduate					
	Geography-Geographic Analyses BA	1	4	4	8	2
	Total Undergraduate	10	16	17	19	10
	Graduate					
	Geography MA	6	14	9	12	14
	Regional Planning MPA	2	0	1	0	0
	Regional Planning MSA	0	0	0	-	-
	Total Graduate	8	14	10	12	14
	Department Totals	18	30	27	31	24
Political Science						
	Undergraduate					
	Political Science-Applied Pub Policy BA	11	7	10	4	6
	Political Science - Int'l Relations BA	25	16	15	23	22
	Political Science BA	35	33	37	61	43
	Total Undergraduate	71	56	62	88	71
	Graduate					
	Individualized Program MSA	0	0	-	-	-
	Human Resource Mgmt. MSA	2	1	1	-	-
	Public Administration MSA	0	0	-	-	-
	Training & Developmental MSA	1	0	-	-	-
	Nonprofit Administration MSA	0	1	-	-	-

Academic Plan		Degree Year				
		2010-11	2011-2012	2012-13	2013-14	2014-15
Political Science (continued)						
	Graduate					
	Individualized Program MPA	1	0	-	-	-
	Human Resource Mgmt. MPA	8	4	1	-	-
	Public Administration MPA	13	25	19	-	-
	Training & Development MPA	1	0	-	-	-
	Nonprofit Administration MPA	3	2	1	-	-
	Total Graduate	29	33	22	0	0
	Department Totals	100	89	84	88	71
Public Policy and Administration						
	Graduate					
	Human Resource Mgmt MPA	-	-	7	9	9
	Human Resource Mgmt MSA	-	-	1	0	1
	Nonprofit Administration MPA	-	-	2	4	11
	Public Administration MPA	-	-	18	40	30
	Public Administration MSA	-	-	0	0	0
	Individualized Program MPA	-	-	0	0	0
	Training & Development MPA	-	-	0	0	0
	Training & Development MSA	-	-	1	0	0
	Total Graduate	-	-	29	53	51
	Department Totals	-	-	29	53	51

Academic Plan		Degree Year				
		2010-11	2011-2012	2012-13	2013-14	2014-15
Management						
	Undergraduate					
	Business Management BS	132	135	133	152	155
	Total Undergraduate	132	135	133	152	155
	Graduate					
	Bus Admin: General MBA	24	28	24	22	40
	Bus Admin: Management MBA	1	0	0	0	0
	Bus Admin: Executive MBA	0	0	0	0	0
	Total Graduate	25	28	24	22	40
	Department Totals	157	163	157	174	195
Marketing						
	Undergraduate					
	Marketing BS	98	100	118	130	139
	Total Undergraduate	98	100	118	130	139
	Graduate					
	Bus Admin: Tech-Electronic MBA	1	0	0	0	0
	Total Graduate	1	0	0	0	0
	Department Totals	99	100	118	130	139
Social Work						
	Undergraduate					
	Social Work BSW	35	42	56	47	39
	Total Undergraduate	35	42	56	47	39

Academic Plan	Degree Year				
	2010-11	2011-2012	2012-13	2013-14	2014-15
<i>Social Work (continued)</i>					
Graduate					
Social Work MSW	34	38	53	54	57
Social Work MSW Advanced Standing	-	-	-	-	17
Total Graduate	34	38	53	54	74
Department Totals	69	80	109	101	113
<i>College of Business and Public Affairs</i>					
<i>Undergraduate Totals</i>	633	631	724	798	830
<i>College of Business and Public Affairs Graduate Totals</i>	122	133	156	157	200
<i>College of Business and Public Affairs Totals</i>	755	764	880	955	1030
<i>College of Education</i>					
<i>Counseling and Educational Psychology</i>					
Graduate					
Counseling: Elementary MED	15	24	19	49	1
Counseling: Secondary MED	44	43	40	49	1
Counseling: Higher Ed/Stu Affairs MS	14	18	24	36	33
Counseling: School MED	-	-	-	-	43
Total Graduate	73	85	83	134	78
Department Totals	73	85	83	134	78
<i>Early Childhood and Special Education</i>					
Undergraduate					
Early Childhood Education BSED	51	3	-	-	-
Special Education BSED	83	99	28	0	0
Special Education : 7-12 BSED	-	-	1	7	5
Special Education: PK-8 BSED	-	-	33	87	130
Total Undergraduate	134	102	62	94	135

Academic Plan		Degree Year				
		2010-11	2011-2012	2012-13	2013-14	2014-15
Early Childhood and Special Education (continued)						
	Early Childhood Education MED	-	-	-	-	-
	Special Education MED	32	23	30	17	11
	Special Education MED (online)	-	-	-	7	8
	Special Education MED (Philadelphia)	-	-	-	-	2
	Total Graduate	32	23	30	24	21
	Department Totals	166	125	92	118	156
Early and Middle Grades Education						
	Undergraduate					
	Early Childhood Education BSED	-	55	12	0	0
	Early Grades Prep, PK-4 BSED	-	-	146	225	243
	Elementary Education BSED	290	300	35	1	0
	Middle Grades Prep, 4-8 BSED	-	-	26	82	62
	Total Undergraduate	290	355	219	308	305
	Graduate					
	Applied Studies in Teaching and Learning MED	34	12	16	11	11
	Early Childhood Education MED	23	21	1	17	0
	Total Graduate	57	33	17	28	11
	Department Totals	347	388	236	336	316
Literacy						
	Graduate					
	Reading MED	49	67	67	45	29
	Total Graduate	49	67	67	45	29
	Department Totals	49	67	67	45	29

Academic Plan	Degree Year				
	2010-11	2011-2012	2012-13	2013-14	2014-15
Professional and Secondary Education					
Graduate					
Secondary Education MED	13	14	15	9	4
Total Graduate	13	14	15	9	4
Department Totals	13	14	15	9	4
<i>College of Education Undergraduate Totals</i>	424	457	281	402	440
<i>College of Education Graduate Totals</i>	224	222	212	240	143
<i>College of Education Totals</i>	648	679	493	642	583
College of Health Sciences					
Health					
Undergraduate					
Public Health: Health Promotion BS	17	29	22	38	37
Public Health: Environmental BS	6	13	7	8	9
Nutrition and Dietetics BS	61	6	-	-	-
Health Science: General BS	14	11	17	14	17
Health Science: Respiratory Care BS	24	22	27	22	25
Total Undergraduate	122	81	73	82	88
Graduate					
Health: School Health MED	27	10	12	9	8
Public Health MPH: Community	23	32	40	36	28
Public Health MPH: Integrative	4	4	9	2	10

Academic Plan		Degree Year				
		2010-11	2011-2012	2012-13	2013-14	2014-15
Health (continued)						
	Graduate					
	Public Health MPH: Administrative	5	13	12	1	0
	Public Health MPH: Environment	4	5	6	2	5
	Public Health MPH: Nutrition	-	2	-	-	-
	Public Health MPH: Management	-	-	8	14	21
	Total Graduate	63	66	87	64	72
	Department Totals	185	147	160	146	160
Kinesiology						
	Undergraduate					
	Health & Physical Education BS	86	88	80	60	47
	Pre-Physical Therapy BS	14	16	34	55	44
	Pre-Chiropractic BS	1	0	0	3	1
	Pre-Occupational Therapy BS	1	5	14	26	28
	Exercise Science Specialist BS	42	44	37	44	47
	Total Undergraduate	144	153	165	188	167
	Graduate					
	Hlth & Phys Ed: Exercise Phys MS	6	7	10	3	1
	Sport & Athletic Admin MSA	3	0	1	0	0
	Sport Mgt & Athletics MPA	11	1	1	0	0

Academic Plan		Degree Year				
		2010-11	2011-2012	2012-13	2013-14	2014-15
<i>Kinesiology (continued)</i>						
	Graduate					
	MS in Physical Education	0	0	1	1	0
	MS in Ex Sport Phys: Athl Trng	-	-	2	6	6
	MS in Exercise/Sport Physiology	-	-	2	4	7
	Total Graduate	20	8	17	14	14
	Department Totals	164	161	182	202	181
<i>Nursing</i>						
	Undergraduate					
	Nursing BSN	97	108	74	57	30
	Nursing BSN: 2nd degree	-	-	1	26	39
	RN to BSN	51	71	84	63	73
	Total Undergraduate	148	179	159	146	142
	Graduate					
	Nursing - Education MSN	0	0	0	0	0
	Nursing MSN	14	10	17	6	7
	Public Health Nursing MSN: Admin	-	-	-	2	3
	Public Health Nursing MSN: Integ	-	1	-	1	0
	Total Graduate	14	11	17	9	10
	Department Totals	162	190	176	155	152
<i>Sports Medicine</i>						
	Undergraduate					
	Athletic Training BS	24	35	32	41	42
	Total Undergraduate	24	35	32	41	42
	Department Totals	24	35	32	41	42

Academic Plan		Degree Year					
		2010-11	2011-2012	2012-13	2013-14	2014-15	
Nutrition							
	Undergraduate						
		Nutrition and Dietetics BS	-	79	103	115	140
		Total Undergraduate	-	79	103	115	140
	Graduate						
		Public Health MPH: Nutrition	-	-	14	16	18
		Total Graduate	-	-	14	16	18
		Department Totals	-	79	117	131	158
Communicative Disorders							
	Undergraduate						
		Communicative Disorders BA	51	41	59	75	90
		Total Undergraduate	51	41	59	75	90
	Graduate						
		Communicative Disorders MA	31	32	28	27	27
		Total Graduate	31	32	28	27	27
		Department Totals	82	73	87	102	117
College of Health Sciences Undergraduate Totals			489	568	591	647	669
College of Health Sciences Graduate Totals			128	117	163	130	141
College of Health Sciences Totals			617	685	754	777	810
College of Visual and Performing Arts							
Applied Music							
	Undergraduate						
		Music: Performance Instrument	10	13	13	10	11
		Music: Performance Jazz BM	1	3	2	1	0

Academic Plan		Degree Year				
		2010-11	2011-2012	2012-13	2013-14	2014-15
Applied Music (continued)						
	Undergraduate					
	Music: Performance Voice BM	2	4	7	5	3
	Music: Performance Keyboard BM	2	1	2	5	1
	Total Undergraduate	15	21	24	21	15
	Graduate					
	Music: Piano Pedagogy MM	1	4	0	1	0
	Music Performance MM	11	10	8	15	15
	Total Graduate	12	14	8	16	15
	Department Totals	27	35	32	37	30
Art						
	Undergraduate					
	Graphic and Interior Design	-	-	-	-	30
	Studio Arts BA	2	0	1	1	0
	Studio Arts BFA	41	35	47	48	26
	Total Undergraduate	43	35	48	49	56
	Department Totals	43	35	48	49	56
Music History						
	Graduate					
	Music History MA	1	0	-	-	-
	Total Graduate	1	0	-	-	-
	Department Totals	1	0	-	-	-

Academic Plan		Degree Year					
		2010-11	2011-2012	2012-13	2013-14	2014-15	
Music Theory, History and Composition							
	Undergraduate						
		Music: Elective Studies BM	5	14	8	5	6
		Music: Theory and Composition BM	7	1	7	4	5
		Total Undergraduate	12	15	15	9	11
	Graduate						
		Music History MA	-	-	1	0	0
		Music: Composition MM	0	0	0	0	0
		Music: History & Literature	0	0	0	1	0
		Music: Theory & Composition MM	0	0	0	1	4
		Total Graduate	0	0	1	2	4
	Department Totals		0	8	16	11	15
Music Education							
	Undergraduate						
		Music Education: Instrument BM	32	42	29	22	30
		Music Education: Voice BM	11	22	15	10	16
		Music Education: Keyboard BM	3	5	7	2	5
		Total Undergraduate	46	69	51	34	51
	Graduate						
		Music Education MM -Performance	10	7	14	5	8

Academic Plan		Degree Year				
		2010-11	2011-2012	2012-13	2013-14	2014-15
Music Education (continued)						
	Graduate					
	Music Education MM-Technology	1	5	2	1	4
	Music Education MM: Research	2	1	1	3	6
	Total Graduate	13	13	17	9	18
	Department Totals	59	82	68	43	69
Theatre Arts						
	Undergraduate					
	Theatre Arts: Performance BA	3	6	4	8	4
	Theatre Arts: Music Theatre BA	10	4	9	7	7
	Theatre Arts: Tech Production BA	6	1	3	4	2
	Theatre Arts: General BA	8	6	3	4	7
	Theatre Arts: Dance BA	-	1	2	1	1
	Total Undergraduate	27	18	21	24	21
	Department Totals	27	18	21	24	21
<i>College of Visual and Performing Arts Undergraduate Totals</i>		143	158	159	137	154
<i>College of Visual and Performing Arts Graduate Totals</i>		26	27	26	27	37
<i>College of Visual and Performing Arts Totals</i>		169	185	185	164	191
University Undergraduate Totals		2,689	2,869	2,972	3,232	3,383
University Graduate Totals		665	645	714	740	693
University Totals		3,354	3,514	3,686	3,972	4,076



TUITION & FEES

Tuition and Fees by Semester

Tuition Category	2010-11	2011-12	2012-13	2013-14	2014-15	2015-16
Undergraduate Tuition						
Full-Time In-State	\$ 2,902.00	\$ 3,120.00	\$ 3,214.00	\$ 3,311.00	\$ 3,410.00	\$ 3,530.00
Full-Time Out-of-State	\$ 7,255.00	\$ 7,800.00	\$ 8,035.00	\$ 8,278.00	\$ 8,525.00	\$ 8,825.00
Per Credit In-State	\$ 242.00	\$ 260.00	\$ 268.00	\$ 276.00	\$ 284.00	\$ 294.00
Per Credit Out-of-State	\$ 605.00	\$ 650.00	\$ 670.00	\$ 690.00	\$ 710.00	\$ 735.00
Undergraduate Fees						
Full-Time In-State	\$ 938.00	\$ 938.65	\$ 1,096.05	\$ 1,114.00	\$ 1,161.90	\$ 1,200.78
Full-Time Out-of-State	\$ 996.85	\$ 1,027.65	\$ 1,188.05	\$ 1,209.00	\$ 1,271.90	\$ 1,314.78
Per Credit In-State	\$ 130.00	\$ 157.72	\$ 91.41	\$ 92.00	\$ 97.24	\$ 100.90
Per Credit Out-of-State	\$ 154.92	\$ 165.72	\$ 99.41	\$ 100.00	\$ 106.24	\$ 109.90
Graduate Tuition						
Full-Time In-State	\$ 3,483.00	\$ 3,744.00	\$ 3,861.00	\$ 3,978.00	\$ 4,086.00	\$ 4,230.00
Full-Time Out-of-State	\$ 5,573.00	\$ 5,616.00	\$ 5,796.00	\$ 5,967.00	\$ 6,129.00	\$ 6,345.00
Per Credit In-State	\$ 387.00	\$ 416.00	\$ 429.00	\$ 442.00	\$ 454.00	\$ 470.00
Per Credit Out-of-State	\$ 619.00	\$ 624.00	\$ 644.00	\$ 663.00	\$ 681.00	\$ 705.00
Graduate Fees						
Full-Time In-State	\$ 807.00	\$ 892.32	\$ 1,054.40	\$ 1,067.00	\$ 1,115.25	\$ 1,156.13
Full-Time Out-of-State	\$ 866.20	\$ 982.32	\$ 1,144.40	\$ 1,157.00	\$ 1,223.25	\$ 1,264.13
Per Credit In-State	\$ 214.00	\$ 100.37	\$ 105.05	\$ 106.00	\$ 110.78	\$ 114.75
Per Credit Out-of-State	\$ 158.24	\$ 110.37	\$ 115.05	\$ 116.00	\$ 122.78	\$ 126.75
Residence Halls						
Meal Plan*	\$ 1,189.00	\$ 1,218.00	\$ 1,247.00	\$ 1,272.00	\$ 1,293.00	\$ 1,326.57

*14 Meals per week + \$250 Flex Dollars

For more information on tuition, fees, and meal plan please visit http://www.wcupa.edu/_information/afa/fiscal/bursar/tuition.asp



LIBRARY RESOURCES

Library Statistics

FY 2011-2012 through 2014-2015

Holdings	2011-2012	2012-2013	2013-2014	2014-2015	One Year Difference
Library Holdings					
Volumes	759,153	757,875	758,344	745,645	-12,699
Microforms	926,451	926,544	926,596	926,629	33
E-Books	643,370	654,989	844,919	766,280	-78,639
Audio/Video units*	199,454	227,395	255,249	835,363	580,114
Circulation (General & Reserve)	64,373	57,195	68,218	63,802	-4,416
Holdings Total	2,528,428	2,566,803	2,905,718	3,408,323	502,605
Total FTE Staff (includes student assistants)	45.92	45.58	49.13	50.37	1.24

*Includes tapes, CDs, DVDs

Other Library Materials	2013-2014	2014-2015
Items Digitized by WCU Library	2,300	4,690
Digital Art Images	2,776,861	2,576,861
Digital Pamphlets, Reports, etc.	595,713	2,916,598
Digital Manuscript Pages	6,200,000	6,400,000

For questions /comments or recommendations for other data to include in the Fact Book, please contact Nilima Inamdar, Office of Institutional Research, WCU, 887, Matlack Street, West Chester PA 19381. Email: ninamdar@wcupa.edu Phone: 610-436-2456.